



+91 7023301333



support@ahujagroup.in



www.AhujaGroup.in

- ✓ Quality product of Ahuja Group.
- ✓ German Technology by FLUC GmbH.
- ✓ Heavy duty for moving heavy loads.
- ✓ Unique design and features
- ✓ World class after sales support.



ahuja
group

INDEX

Sr. No. No.	Code	Product Name	Page
1	SE/HHPT/25 Eco	Hand Pallet Truck	3
2	SE/SHAKTI 25 / 800x550	Hand Pallet Truck	3
3	SE/HHPT/30	Hand Pallet Truck	3
4	SE/HHPT/50	Hand Pallet Truck	3
5	SE/THHPT-2500	Hand Pallet Truck for transformer	4
6	SE/HL/SP-1008	Hight Lift Pallet Truck	4
7	RL/LT/PT 2.5	Hand Reel Truck	4
8	SE/PT 30	Lift Table Truck	5
9	SE/PT 15	Lift Table Truck	5
10	SE/PT50/1600x810	Lift Table Truck	5
11	SE/PT100/2035x750	Lift Table Truck	5
12	SE/PT70/1220X610	Lift Table Truck	5
13	SE/PT100/1016X510	Lift Table Truck	6
14	SE/RDH 35	Rotary Drum Handling Stacker	6
15	SE/MS 1016	Manual Stacker	6
16	SE/MS 1516	Manual Stacker	6
17	SE/AMS/1016	Manual Stacker	7
18	SE/AMS/2016	Manual Stacker	7
19	SE/SES 1030	Semi-Electric Stacker	7
20	SE/SES 1530	Semi-Electric Stacker	8
21	SACK/STEP/TRLY	Sack Step Trolley	8
22	DWB/CT/R/TRLY	Double Wheel Barrow Trolley	8
23	SE/S/NW/6000	Heavy Duty Skates	9
24	SE/S/NW/15000	Heavy Duty Skates	9
25	SE/HT 150	Hand Trolley	9
26	SE/HT 300	Hand Trolley	9
27	PLAT/F/7146/TRLY	Hand Trolley	9
28	SE/HDCCT 200 KG	Heavy Duty chip Collection Trolley	10
29	PLAT/S/9060/TRLY	Hand Trolley	10
30	PLAT/S/1275/TRLY	Hand Trolley	10
31	PLAT/S/1590/TRLY	Hand Trolley	10
32	SNGL/CYL/TRLY	Single Gas Cylinder Trolley	10
33	DBL/GAS/TRLY	Double Gas Cylinder Trolley	11
34	HESS/NINE/TRLY	Hessan Trolley	11
35	DRUM/STD/3WHL/TRLY	Drum Trolley	11
36	2IN1/PCT	2 in 1 Trolley	11
37	StackEasy Customized Scissor Lifts		12
38	Blow Moulded Pallets		13

StackEasy Hydraulic Hand Pallet Truck

SE/HHPT/ 25 Eco

Capacity	2500 kg
Lifting height	200 mm
Fork Length	1150 mm
Fork Width	550 mm
Self weight	73-92 kg

Features:

- ✓ Top quality & competitive.
- ✓ Fastest moving product
- ✓ Enhances productivity
- ✓ Long service life



StackEasy Baby Pallet Truck

SE/SHAKTI 25 800X550

Capacity	2500 Kg
Fork Length	800 mm
Width Overall Fork	550 mm
Lower Fork Height	85 mm
Max Lifting Height	200 mm
Steering Wheel	200 x 50 mm
Roller Small	80x70 mm.
Self Weight	73-92kg

Features:

- ✓ Specially designed to lift and transport the widest variety of loads in stores and warehouse.
- ✓ Strong, torsion-resistant steel construction.
- ✓ Load-in/lead-out rollers under the fork tips enable pallets to be entered any kind of pallet.



StackEasy Hydraulic Hand Pallet Truck

	SE/HHPT/30	SE/HHPT/30
Capacity	3000kg	3000kg
Lowered height	85mm	85mm
Fork Length	1150mm	1220mm
Fork Width	550mm	685mm
Over All Length	1534mm	1534mm
Lifting Height	190mm	190mm

Features :

- ✓ External is very smooth & nice appearance.
- ✓ Maintenance-free design.
- ✓ High reliability, suitable for a variety of environments. It can be used for 3 ~ 5 years under normal maintenance.



StackEasy Hydraulic Hand Pallet Truck

SE/ HHPT/50

Capacity	5000 kg
Fork Length	1150 mm
Fork Width	550 mm
Lifting Height	190 mm
Weight	140 kg

Features :

- ✓ Top quality & competitive.
- ✓ Heavy duty for moving heavy load.

StackEasy Hydraulic Pallet Truck for Transformer

Model No	SE/THHPT-2500
Capacity	2500 Kg
Lift	100 mm
Overall Width	865 mm
Fork Width	187 mm
Fork Length	1220 mm
Front Wheels	2 Nos Dia 200x50
Rear Wheels	4 Nos. Dia 68
Min. Pallet Gap	70 mm
Self-Weight	175 Kg



StackEasy Hight Lift Pallet Truck

Model No	SE/HL/SP-1008
Capacity	1000 Kg
Fork Length	1150 mm
Fork Width	540 mm
Lifting Height	800 mm
Min. Height	85 mm

StackEasy Hydraulic Reel Pallet Truck

Model No	RL/LT/PT 2.5
Capacity	2500 Kg
Fork Length	1550 mm
Reel Suitable Diameter	700 - 1200 mm
Lifting Height Approx	200 mm
Close Height Approx	95 mm
Up and Down	Manual
Floor Movement	Manual
Wheels	Nylon





StackEasy Hydraulic Lift Table Truck

	SE/PT 30	SE/PT 15
Capacity	300 kg	150 kg
Min.table height	285/340 mm	220 mm
Max.table height	880 mm	720 mm
The dimension of table	850x500 mm	700x450x36 mm
Caster wheel	Φ125x40 mm	Φ100x25 mm
Foot pedal cycles to max.height	≤27	≤28
Net Weight	77 kg	46 kg
Height of handle from the ground	990 mm	950 mm

Features:

- ☑ Two kinds of lowering systems release nut & lever.
- ☑ Handle with plate protection for workers safety.

StackEasy Hydraulic Lift Table Truck

	SE/PT50/1600x810	SE/PT100/2035X750
Capacity	500 kg	1000 kg
Min.table height	290 mm	360 mm
Max.table height	915 mm	1360 mm
Dimension of table	1600x810 mm	2035x750 mm
Caster wheel	125*40 mm	F180x50/F80x40 mm
Foot pedal cycles to max.height	≤55 times	≤200 times
Net Weight	154 kg	198 kg
Height of handle from the ground	975 mm	1000 mm

Features :

- ☑ Two kinds of lowering systems release nut & lever.
- ☑ Handle with plate protection, for workers safety.



StackEasy Hydraulic Lift Table Truck

SE/PT70/ 1220x610

Capacity	700 kg
Min.table height	445 mm
Max.table height	1500 mm
Dimension of table	1220x610 mm
Caster wheel	Φ125x40 mm
Foot pedal cycles to max.height	≤97 times
Net Weight	195 kg
Height of handle from the ground	1015 mm

Features :

- ☑ Two kinds of lowering systems release nut & lever.
- ☑ Handle with plate protection for workers safety.

StackEasy Hydraulic Lift Table Truck

SE/PT100 /1016x510

Capacity	1000 kg
Min. table height	380 mm
Max. table height	990 mm
The dimension of table	1016x510x55 mm
Caster wheel	Φ127x50 mm
Foot pedal cycles to max.height	≤82 mm
Net Weight	140 mm
Height of handle from the ground	980 mm

Features:

- ✓ Two kinds of lowering systems release nut& lever.
- ✓ Handle with plate protection for workers safety



StackEasy Hydraulic Rotary Drum Handling Stacker

SE/RDH 35

Rated Capacity	350 Kg
Lifting Height	1425 mm
Overall Length	1190 mm
Overall Width	890 mm
Overall Height	2020 mm
Net Weight	155 Kg

Features:

- ✓ Ideal for applications where barrels are stacked, transported or are being used for pouring the fluid inside.
- ✓ The rotation of the barrel is controlled by turning the control handle.



StackEasy Hydraulic Manual Stacker

	SE/MS 1016	SE/MS 1516
Capacity	1000 kg	1500 Kg
Fork Length	1150 mm	1150 mm
Fork Width	550 mm	550mm
Overall Length	1280 mm	1280mm
Load Center	500 mm	500mm
Lifting Height	1600 mm	1600mm
Net Weight	250 kg	250kg

Features :

- ✓ High quality mast steel ensures rigidity, durability.
- ✓ Integral pump, which prevents loosening and is leak-proof.
- ✓ High efficiency pump makes operating lighter& comfortable.
- ✓ You can set the active safety valve to prevent overloading of use.
- ✓ Maintenance-free design, ensures security, reduces service cost.
- ✓ Regardless of loading weight, lifting speed always remains the same.
- ✓ Handle and foot pedal operated.
- ✓ Hand control valve for precise control and convenience.



StackEasy Adjustable Manual Stacker

	SE/AMS/1016	SE/AMS/2016
Capacity	1000 Kg	2000 Kg
Fork Length	900 mm	900 mm
Adjustable Fork Width up to	680mm	680mm
Lower Fork Height	85 mm	85 mm
Lifting Height	1600 mm	1600 mm
Lifting speed (mm/stroke)	20	20
Dimension	2100x750x1420mm	2100x750x1420mm
Self Weight	227kg	250kg

Features :

- ☑ The newest design of hydraulic stacker.
- ☑ Special C type mast which is more stable and strong.
- ☑ Quick lift pump to save time and labor.
- ☑ Easy-to-operate controller.



StackEasy Semi-electric Stacker

SE/SES1030

Capacity	1000 Kg
Fork Length	1100 mm
Width Overall Fork	570 mm
Lower Fork Height	85 mm
Lifting Height	3000 mm
Extended mast Height	3570mm
Load Centre distance	800mm
Turning Radius	1400 mm
Self Weight	430kg (Including battery)
Big Wheel	180x50mm
Small Wheel	74x70 mm
Lift speed loaded/Unloaded:	90/140mm/s
Lowering Speed loaded/Unloaded:	120/100mm/s
Dimension :	2080x1720x777mm
Parking Brake	Manual
Battery :	12V 150AH 1.5 Kw 45 kg



Features:

- ☑ Strong, robust and classical design
- ☑ Has an appealing look.
- ☑ The smooth outline makes it stand out from traditional stacker.
- ☑ Made of high quality steel to ensure stability and strength.
- ☑ Durable and easily serviceable.
- ☑ Easy to operate.
- ☑ Built-in charger.

StackEasy Semi-electric Stacker

SE/SES1530

Capacity	1500 Kg
Fork Length	1100 mm
Width Overall Fork	570 mm
Lower Fork Height	85 mm
Lifting Height	3000 mm
Extended mast Height	3520mm
Load Centre distance	600mm
Turning Radius	1400 mm
Self Weight	543kg (Including battery)
Big Wheel	180x50mm
Small Wheel	74x70 mm
Lift speed loaded/Unloaded:	65/100mm/s
Lowering Speed loaded/Unloaded:	85/70mm/s
Dimension :	2030x777x1720mm
Parking Brake	Manual
Battery :	12V 150AH 1.5 Kw 45 kg

Features:

- ✓ Strong, robust and classical design.
- ✓ Has an appealing look.
- ✓ The smooth outline makes it stand out from traditional stacker.
- ✓ Made of high quality steel to ensure stability and strength.
- ✓ Durable and easily serviceable.
- ✓ Easy to operate.
- ✓ Built-in charger.



StackEasy Sack Step Trolley

SACK/STEP/TRLY

Capacity	200 kg
Dimension	1200x600x500mm
Wheel size	160x40mm

StackEasy Staircase stair climbing trolley is the perfect option to move load up or down a staircase. A beautiful trolley that makes stair climbing look easy. This trolley can help you carry your load up a staircase using its three wheel arrangement. This one is a must



StackEasy Double Wheel Barrow Trolley,

DWB/CT/R/TRLY

Capacity	130 Kg
Dimension	710MMx570MMx1270MM
Wheel Size	300 x 50 MM
Wheel Material	Cushion Tyred Rubber Wheel
Suitable for transportation of sacks, bags & other loads	

StackEasy Heavy Duty Skates

	SE/S/NW/6000	SE/S/NW/15000
Capacity	6000 Kg	15000 Kg
Dimension (LxBxH)	300x222x110mm	400x308x110mm
No of wheel	4 Nos	9 Nos
Wheel Size	80x 70mm	80x 70mm
Wheel Material	PU With handle	PU With handle
Self Weight	16 Kg	37 Kg

Features :

- ☑ Two kinds of lowering systems release nut & lever.
- ☑ Handle with plate protection, for workers safety.



StackEasy Hand Trolley

	SE/HT 150	SE/HT300
Capacity	150 Kg	300 Kg
Dimension	710MMx460MM	900MMx600MM Wheel
Wheel Diameter	100 mm	130 mm wheel
wheel material	Nylon	Nylon
Castor wheel	2 Swivel and 2 fixed	2 Swivel and 2 fixed
Type	Foldable	Foldable



StackEasy Hand Trolley

PLAT/F/7146/TRLY

Capacity	150 kg
Dimension	710MMx460MM
Material	Rubber on nylon centers Material
Caster Wheel	2 swivel + 2 fixed 100 mm
Powder coated oven baked epoxy	Siemens grey
Package	120X730X475
Weight including Packing	14 kg

StackEasy Heavy Duty Chip Collecting Trolley

SE/HDCCT 200 KG

Capacity	200 Kg
Material	Mild Steel
Condition	New
Cart Size	600*900*900
Color	Smoke gray



Features :

- ☑ Trolley is fitted with 4 x 4 inches
- ☑ wheels (2 x Swivel and 2 x Fix) Coolant Drain Valve



StackEasy Hand Trolley

PLAT/S/9060/TRLY

Capacity	350 kg
Dimension	900MMx600MM
Caster Wheel	2 swivel + 2 fixed, rigid castor, 130 mm
Material	Powder
Coated oven baked epoxy	Siemens grey

StackEasy Hand Trolley

PLAT/S/1275/TRLY

PLAT/S/1590/TRLY

Capacity	500 kg	1000 kg
Dimension	1200MMx750MM	1500MMx900MM
Wheel	2 swivel + 2 fixed, 200mm x 50 mm	2 swivel + 2 fixed, 200mm x 50 mm
Material	Powder coated oven baked epoxy	Powder coated oven baked epoxy
Color	Siemens grey	Siemens grey

Note: Wheel -2 swivel + 2 fixed rigid castor. Pressed steel heavy duty castors 200mm dia, with integrally moulded on heavy duty pressed steel centers with ball bearing, with thread guards. 16 Gauges Pressed steel formed deck reinforced with heavy duty formed 16 gauge running and crossed beams, Powder coated oven baked epoxy ; Siemens grey



StackEasy Single Gas Cylinder Trolley,

SNGL/CYL/TRLY

Capacity	65 kg
Dimension	475MMx375MMx1050MM
Wheel Size	200 x 50 MM
Wheel Material	Cushion Tyred Rubber Wheel
Suitable for transportation of single gas cylinder	



StackEasy Double Gas Cylinder Trolley

DBL/GAS/TRLV

Capacity	80 Lt (3CFT)
Dimension	620MMx570MMx 1270MM
Wheel Size	350 x 50 MM
Wheel Material	Cushion Tyred Rubber
Wheel Suitable for transportation of double gas cylinders.	

StackEasy Hessian Trolley

HESS/NINE/TRLV

Capacity	200 Kg
Dimension	508x205x1220 mm
Wheel Size	200 x 50 mm
Wheel Material	Cushion Tyred RubberWheel

To move the material manually from one place to another in the plant & offices, very easy smooth working and sturdy



StackEasy Drum Trolley

DRUM/STD/3WHL/TRLV

Capacity	205 Kg
Dimension	1440MMx700MMx900MM
Wheel Size	250 x 60 mm
Wheel Material	Cushion Tyred Rubber Wheel

To move the Drums manually from one place to another in the plant , very easy smooth working and sturdy

StackEasy 2 IN 1 Trolley

2IN1/PCT

Capacity	150 kg
Dimension	1240x500x500mm
Wheel Size	250x75mm & 100x30mm

StackEasy 2 in 1 trolley is a unique material handling solution. It can be a Hessian trolley or a platform trolley once it opens out. A unique 2 in 1 solution for your material handling requirements. 2 in 1 trolleys are fitted with long life wheels and reliable performance for a number of applications



StackEasy Customized Scissor Lifts.



Manual Scissor Lifts.



Power Pack Operated Scissor Lifts.

Blow Moulded Pallets

- Longer service life, adaptable any environment, resistant to low temperatures.
- Empty pallets can be stacked to save storage space and transportation costs.
- Light weight, high bearing strength, high impact resistance.

Dimension (LxBxH)	: 1000 mm
Material	: HDEP Virgin
Color	: Blue
Static	: 4000 Kg Unified Load
Dynamic	: 1000 Kg
Entry	: 2 Way / 2 Way



Advantages of Plastic Pallets over Wooden Pallets.

- **Lightweight and Compact.**
Easy to lift, easy to move, and easy to ship.
- **Durability**
Wooden pallets disintegrate into splinters and snap. Plastic pallets do not break. They are designed to be strong to withstand damage.
- **East to clean.**
The plastic pallets are non-porous and hence are easier to clean than wooden pallets. If wooden pallets get wet they attract termites and fungus.
- **Eco Friendly**
These pallets can be recycled and upcycled . Wood once infested with termites has to be scrapped.
- **Safe**
Plastic pallets do not have nails and sharp edges hence they do not hurt handlers.



PU Wheel Set



Hydraulic Valve Assembly



HHPTS335 Seal Kit



HHPTS316 Big Wheel Shaft



HHPTS313 Retaining Plate



HHPTS307 Retaining Ring



HHPTS302 Big Spring



HHPTS301 Spring Cover



HHPTS234HS Small Roller



HHPTS228S Connecting Plate



HHPTS224S Connecting Plate With Shaft



HHPTS222S Arm Of Force Block



HHPTS105 Holed Shaft



HHPTS106 Elastic Pin



HHPTS107 Bushing



HHPTS110 Control Arm



HHPTS102 Roller Chain



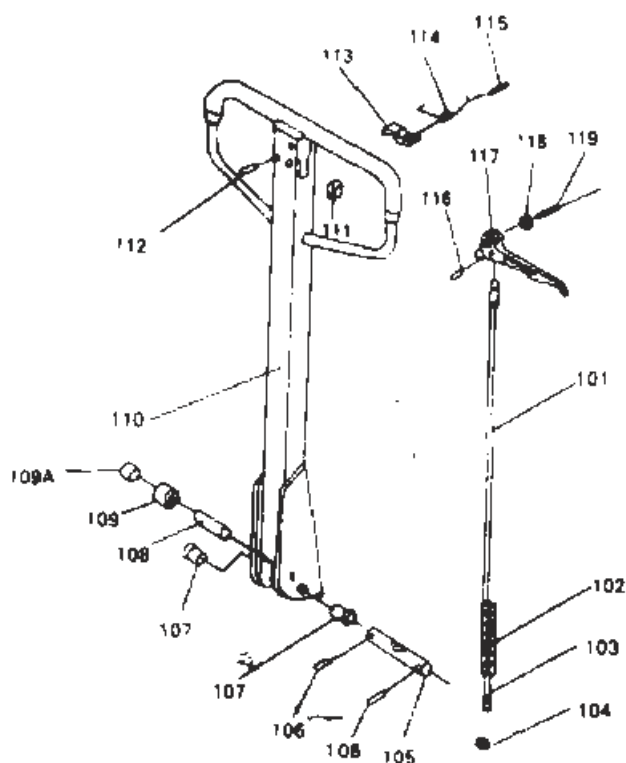
HHPT Pump Cylinder



HHPT Complete Pump



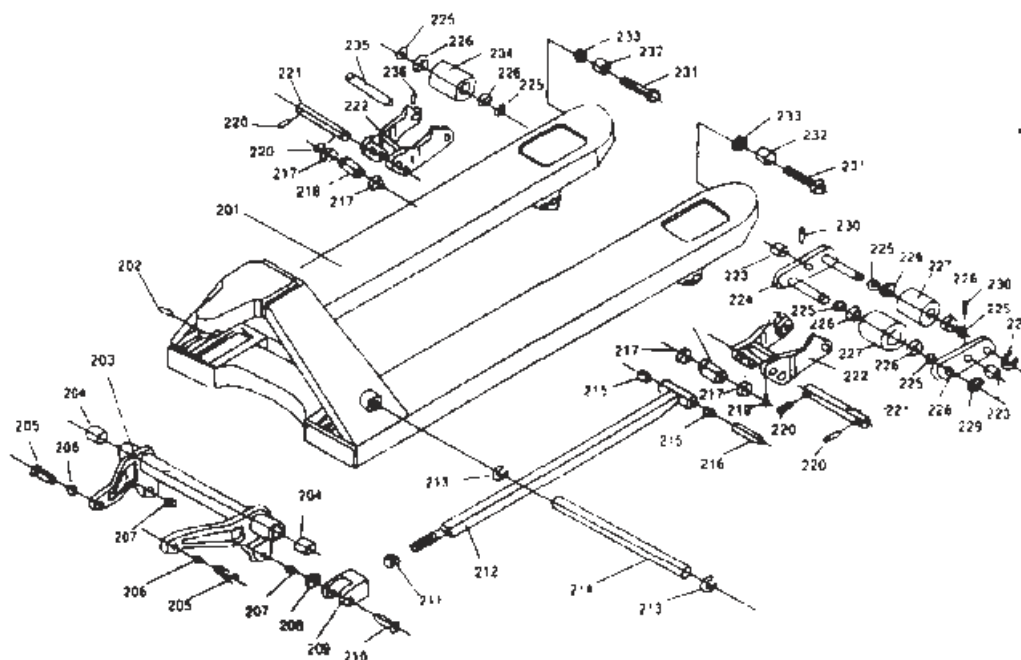
HHPTS303, Small Piston Rod



Parts of handle

Order	Description	Quantity
101	Long Connecting Rod	1
102	Roller Chain	1
103	Short Connecting Rod	1
104	Lock Nut	1
105	Holed Shaft	1
106	Elastic Pin	2
107	Bushing	2
108	Compression Roller Pin	1
109	Compression Roller	1
109A	Bushing	1

Order	Description	Quantity
110	Control Arm	1
111	Rubber Gasket	1
112	Elastic Pin	1
113	Hinge	1
114	Spring	1
115	Elastic Pin	1
116	Elastic Pin	1
117	Finger-shaped Control Arm	1
118	Roller	1
119	Elastic Pin	1



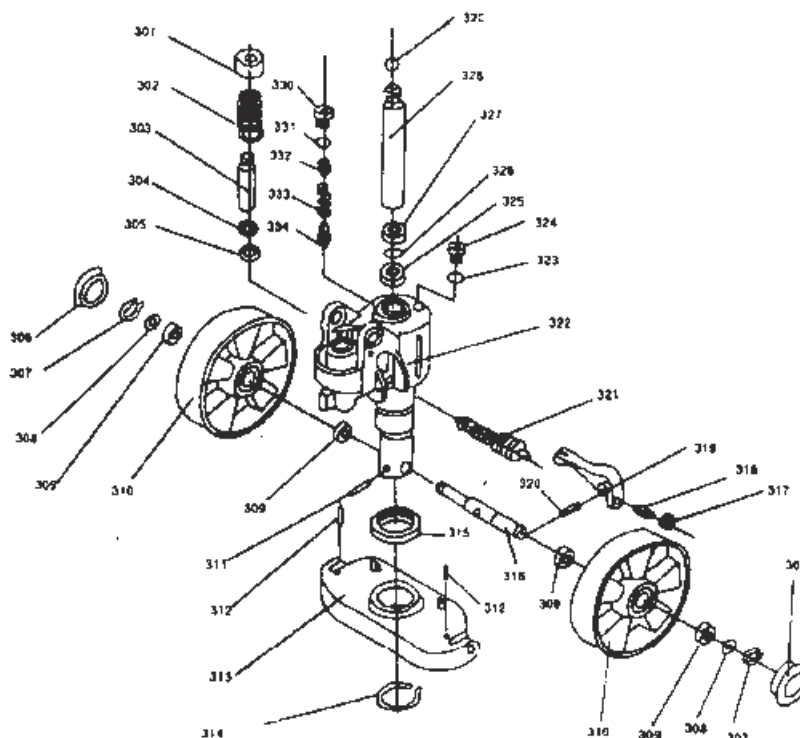
Parts of the main body

Order	Description	Quantity
201	Carrier	1
202	Elastic Pin	1
203	"O" Rod	1
204	Bushing	2
205	Connecting Pin	2
206	Bushing	2
207	Bushing	2
208	Retaining Ring	2
209	Fork of Push Rod	2
210	Shaft	2
211	Nut	2
212	Push Rod	2
213	Elastic Redaining Ring	2
214	Shaft	1
215	Bushing	4
216	Shaft	2
217	Rub-preventive Ground Roller	4
218	Retracting Roller	2

Note: --Dual Roller

Order	Description	Quantity
219	Elastic Pin	2
220	Elastic Pin	4
221	Shift of Arm of Force Block	2
222	Arm of Force Block	2
223	Shift	4
224	Connecting Plate with Shaft	2
225	Gasket	8
226	Bearing	8/4
227	Small Roller	4
228	Connecting Plate	2
229	Elastic Gasket	4
230	Elastic Pin	4
231	Bolt	2
232	Entry Roller	2
233	Lock Nut	2
234	Small Roller	2
235	Small Roller Shaft	2
236	Elastic Pin	2

#--Sinale Roller



Parts of Oil Pump

Order	Description	Quantity
301	Spring Cover	1
302	Big Spring	1
303	Small Piston Rod	1
304	Dust-prevention Ring	1
305	"Y" Ring	1
306	Dust-prevention Cover	2
307	Retaining Ring	2
308	Gasket	2
309	Bearing	4
310	Big Wheel	2
311	Elastic pin	1
312	Elastic pin	2
313	Retaining Plate	1
314	Elastic Retaining Ring	1
315	Bearing	1
316	Big Wheel Shaft	1
317	Helix Nut	1

Order	Description	Quantity
318	Screw	1
319	Balance Rod	1
320	Elastic Pin	1
321	Hydraulic Valve Assembly	1
322	Oil Pump Body	1
323	Sealing Gasket	1
324	Bolt	1
325	"Y" Ring	1
326	"O" Ring	1
327	Oust-prevention Ring	1
328	Big Piston Rod	1
329	Iron Ball	1
330	Adjusting Bolt	1
331	"O" Ring	1
332	Adjusting Screw	1
333	Spring	1
334	Core of Safety Valve	1

The Best in Material Handling Equipment

StackEasy a quality product of Ahuja Group is a renowned manufacturer of material handling equipments made with German technology, under license form FLUC, GmbH. StackEasy equipment is known for its unique features like quality, durability, efficiency and life long service. We have a experienced team of service engineers for prompt after sales service. Our range of products are made using advanced technology and superior quality raw material, with world class quality control yet are available at affordable prices meeting customer requirements.



We don't sell products, we create life long relationship with customers.

All our customers are assured of the best in class technology, international quality products and world class after sales support.

Established in 1970, Ahuja Group endeavours to build tomorrow's enterprises, optimise business and enhance and to end cutomer experience. We deliver quality beyond compare to serve any cutomer, any channel at anytime. A team of passionate, innovative, committed young minds driven by an intuitive zeal serves our very purpose of seamless thinking and working together and outperforming competetion.



bsi.

Certificate of Registration

QUALITY MANAGEMENT SYSTEM – ISO 9001:2015

This is to certify that:

Ahuja Corporation Pvt. Ltd.
A-185, RIICO Prahladpura Industrial Area
Near Shivdaspura, Tonk Road
Jaipur 302 022
Rajasthan
India

Holds Certificate No: **FM 713505**

and operates a Quality Management System which complies with the requirements of ISO 9001:2015 for the following scope:

Manufacturing of Hydraulic and Pneumatic Tube Fittings, Hose Assemblies Equipment's and Accessories.
Previous certificate expired on 13.06.2022
RA Audit conducted on 14.05.2022

For and on behalf of BSI:

Michael Lam - Managing Director Assurance, APAC

Original Registration Date: 2019-06-14
Latest Revision Date: 2022-06-27

Effective Date: 2022-06-27
Expiry Date: 2025-06-13

Page: 1 of 1

...making excellence a habit.

This certificate was issued electronically and remains the property of BSI and is bound by the conditions of contract. An electronic certificate can be authenticated online.
Printed copies can be purchased at www.bsi-group.co.uk/best/bestdirect/buy or telephone +44 (0) 2012 2602 9600.
Further clarification regarding the scope of this certificate and the applicability of ISO 9001:2015 requirements may be obtained by consulting the signatory.
This certificate is valid only if provided signed copies are in compliance with.

Information and Contact: BSI, Standards Court, 389 Chiswick, Uxbridge, Middlesex UB8 3PH, UK; Tel: +44 (0) 2012 2602 9600
BSI Assurance UK Limited, registered in England, company number 1802222, at 389 Chiswick High Road, London W6 4AL, UK,
a Member of the BSI Group of Companies.



Mr. Lalit Ahuja (MD, Ahuja Corporation Pvt. Ltd.)
with Mr. Ravi Sehgal, Chairman EEPC, India

Quality Products of

ahuja
group

Available at

hp **Hydraulics & Pneumatics**



AHUJA CORPORATION PVT. LTD.

A-185, RIICO Prahladpura Industrial Area, Near Shivdaspura, Tonk Road,
Jaipur 302022 Rajasthan, INDIA | Ph.: +91 70233 01333
support@ahujagroup.in | www.AhujaGroup.in