

## PRODUCT CATALOGUE



**"Connect with Confidence"**

# ALUMINIUM AIR PIPING SYSTEM

EASY FAST | RELIABLE | COST- SAVING





<b>Quickair™</b> Introduction	<b>03</b>
<b>Quickair™</b> Aluminium Piping Series	<b>04</b>
<b>Quickair™</b> Pre Installation Chart Open Loop	<b>05</b>
<b>Quickair™</b> Pre Installation Chart Closed Loop	<b>06</b>
<b>Quickair™</b> Technical Details, Certificate and Declarations	<b>07-08</b>
<b>Quickair™</b> Aluminum Piping For Compressed Air & Inert Gases <b>Aluminum Push Fit</b> Series	<b>09-13</b>
<b>Quickair™</b> Aluminum Piping For Compressed Air & Inert Gases <b>Integrated</b> Series	<b>14-18</b>
<b>Quickair™</b> Aluminum Piping For Compressed Air & Inert Gases <b>Coupler</b> Series	<b>19-23</b>
<b>Quickair™</b> Manifolds And Wall Brackets	<b>24-28</b>
<b>Quickair™</b> Special 3Pc Inline Ball Valves And Valves And Actuators	<b>29-32</b>
<b>Quickair™</b> Supports ,Tools And Accessories	<b>33-34</b>
<b>Quickair™</b> Installation Guide <b>Aluminum Push Fit</b> Series	<b>35</b>
<b>Quickair™</b> Installation Guide <b>Integrated &amp; Coupler</b> Series.	<b>36</b>
<b>Quickair™</b> Our Corporate Customers	<b>37</b>
<b>Quickair™</b> Other Products And Services	<b>38</b>
<b>Quickair™</b> Presence All Over India Meet Our Team	<b>39</b>

## Introduction to Quickair™ Aluminum Piping System

In today's fast-paced industrial world, efficient, reliable, and future-ready compressed air and gas distribution is no longer a luxury — it's a necessity. Introducing **Quickair™** — India's leading modular aluminum piping system from **Canares Automation Pvt. Ltd.**, the country's only manufacturer of modular pipe fittings with over 27 years of innovation and expertise.

Quickair™ redefines industrial piping with its lightweight, corrosion-free aluminum tubes (Alloy 6063 T5 Or T6) and innovative push-fit fittings. Designed for compressed air, nitrogen, vacuum, argon, and inert gases, the system delivers:

**Ultra-fast installation** — up to 70% faster than traditional steel, copper, or welded systems (labor costs reduced to just ~20% of total installation)

**Zero corrosion & superior air quality** — smooth, powder-coated interior ensures minimal pressure drop, laminar flow, and contaminant-free delivery

**Leak-proof performance** — full-bore design, reusable fittings, and secure push-to-connect technology (up to 16 bar pressure & -20°C to 90°C temperature range)

**Modular flexibility** — easily expand, modify, or relocate as your facility evolves, with pipe sizes from 20 mm to 290 mm (3/4" – 12")

**Energy & cost savings** — dramatically lower installation, maintenance, and power costs compared to conventional piping

Backed by in-house aluminum extrusion, pan-India dealer network, global standards compliance (ASME B 31.1), and trusted by leading industries nationwide, Quickair™ combines **total functionality with complete efficiency.**

**Connect with confidence. Choose Quickair™ — the smart, profitable, and efficient alternative for modern industrial piping.**

For more details, visit [www.quickair.in](http://www.quickair.in) Or [www.canares.in](http://www.canares.in) or contact our team today.



## Quickair™ Aluminium Push Fit Series :

The Aluminum Push-Fit Series features a durable aluminum body combined with engineered plastic components, including caps, bushes, and sleeves. It is equipped with a stainless steel gripping ring and an O-ring (for the aluminum body version), ensuring secure, leak-proof connections. Designed with advanced push-fit technology, this system allows for quick and effortless installation without the need for additional tools.

The range is available in sizes from **20 mm to 63 mm (¾" to 2½")**, making it suitable for a wide variety of compressed air and inert gas applications.



## Quickair™ Coupler Type Integrated Series :

The Integrated Series is available with an aluminum body . It features a O-ring(Gasket), and uses Grooving technology. With Stainless Steel Allen Bolt , Sizes range from **20 mm to 90mm (¾" to 3-1/2")**



## Quickair™ Coupler Type Series :

The Coupler Type Series is available with an aluminum body . It features a O-ring(Gasket), and uses Grooving technology. Sizes range from **113 mm to 290mm (4" to 12")**



# Pre – Installation Selection Chart For Your Compressor Piping

## Proper line sizing for an network

1. Identify The network Piping
2. Calculate total length of line (feet / Meter)
3. Determine total Flow required

FLOW RATE				CLOSED LOOP SYSTEM									
				164Feet	328Feet	429Feet	984Feet	1640Feet	2460Feet	3280Feet	4265Feet	5249Feet	6561Feet
Nm3/ Hr	NI/ min	m <sup>3</sup> /min	cfm	50Mtr	100Mtr	150Mtr	300Mtr	500Mtr	750Mtr	1000Mtr	1300Mtr	1600Mtr	2000Mtr
10	167	0.0849	6	20	20	20	20	20	20	20	20	20	20
30	500	0.2547	18	20	20	20	20	25	25	25	25	32	32
50	833	0.41035	29	20	20	20	25	25	32	32	32	32	32
70	1167	0.69335	49	20	25	25	32	32	32	40	40	40	40
100	1667	0.83485	59	25	25	32	32	32	40	40	40	40	50
150	2500	1.2452	88	25	32	32	40	40	40	50	50	50	50
250	4167	2.08005	147	32	32	40	40	50	50	50	63	63	63
350	5883	2.9149	206	32	40	40	50	50	63	63	63	63	63
500	8333	4.1601	294	40	50	50	50	63	63	63	76	76	76
750	12500	6.24015	441	50	50	50	63	63	76	76	76	90	90
1000	16667	8.33435	589	50	63	63	63	76	76	90	90	90	113.5
1500	25000	12.49445	883	63	63	76	76	90	90	113.5	113.5	113.5	113.5
2000	29167	14.5745	1030	63	63	76	76	90	113.5	113.5	113.5	113.5	113.5
3000	50000	24.9889	1766	76	76	90	113.5	113.5	113.5	168.3	168.3	168.3	168.3
3500	58332	29.149	2060	76	90	90	113.5	113.5	168.3	168.3	168.3	168.3	168.3
4000	66657	33.3091	2354	76	90	113.5	113.5	113.5	168.3	168.3	168.3	168.3	168.3
4500	74983	37.4692	2648	76	90	113.5	113.5	168.3	168.3	168.3	168.3	168.3	168.3
5000	83308	41.6293	2942	90	113.5	113.5	113.5	168.3	168.3	168.3	168.3	168.3	168.3
5500	91661	45.80355	3237	90	113.5	113.5	168.3	168.3	168.3	168.3	168.3	168.3	168.3
6000	99986	49.96365	3531	90	113.5	113.5	168.3	168.3	168.3	168.3	168.3	168.3	205
6500	108311	54.12375	3825	90	113.5	113.5	168.3	168.3	168.3	168.3	205	205	205
7000	119978	59.95355	4237	113.5	113.5	113.5	168.3	168.3	168.3	168.3	205	205	205
8000	133315	66.6182	4708	113.5	113.5	168.3	168.3	168.3	168.3	168.3	205	205	205

Please note that calculations are based on a maximum total pressure drop of 3 PSIG for the entire network, at 100 PSIG and @ 15.6 ° C. To determine exact pipe diameters and specific pressure drops, please visit our website at [www.quickair.in](http://www.quickair.in) or download the Quickair PD & DIA calculator app.

# Pre – Installation Selection Chart For Your Compressor Piping

## Proper line sizing for an network

1. Identify The network Piping
2. Calculate total length of line (feet / Meter)
3. Determine total Flow required

FLOW RATE				OPEN LOOP SYSTEM									
				164Feet	328Feet	429Feet	984Feet	1640Feet	2460Feet	3280Feet	4265Feet	5249Feet	6561Feet
Nm3/ Hr	NI/ min	m <sup>3</sup> /min	CFM	50mtr	100mtr	150mtr	300mtr	500mtr	750mtr	1000mtr	1300mtr	1600mtr	2000mtr
10	167	0.1698	6	20	20	20	20	20	20	20	25	25	25
30	500	0.5094	18	20	20	25	25	32	32	32	32	40	40
50	833	0.8207	29	20	25	25	32	32	40	40	40	40	50
70	1167	1.3867	49	25	32	32	40	40	50	50	50	50	50
100	1667	1.6697	59	32	32	32	40	50	50	59	50	50	63
150	2500	2.4904	88	32	40	40	50	50	50	63	63	63	63
250	4167	4.1601	147	40	50	50	50	63	63	63	76	76	76
350	5883	5.8298	206	50	50	50	63	63	76	76	76	76	90
500	8333	8.3202	294	50	63	63	63	76	76	90	90	90	113.5
750	12500	12.4803	441	63	63	76	76	90	90	113.5	113.5	113.5	113.5
1000	16667	16.6687	589	63	76	76	90	90	113.5	113.5	113.5	113.5	168.3
1500	25000	24.9889	883	76	76	90	113.5	113.5	113.5	168.3	168.3	168.3	168.3
2000	29167	29.149	1030	76	90	90	113.5	113.5	113.5	168.3	168.3	168.3	168.3
3000	50000	49.9778	1766	90	113.5	113.5	168.3	168.3	168.3	168.3	168.3	168.3	205
3500	58332	58.298	2060	90	113.5	113.5	168.3	168.3	168.3	168.3	168.3	205	205
4000	66657	66.6182	2354	113.5	113.5	168.3	168.3	168.3	168.3	168.3	205	205	205
4500	74983	74.9384	2648	113.5	113.5	168.3	168.3	168.3	168.3	205	205	205	205
5000	83308	83.2586	2942	113.5	168.3	168.3	168.3	168.3	205	205	205	205	260
5500	91661	91.6071	3237	113.5	168.3	168.3	168.3	168.3	205	205	205	260	260
6000	99986	99.9273	3531	113.5	168.3	168.3	168.3	168.3	205	205	260	260	260
6500	108311	108.2475	3825	113.5	168.3	168.3	168.3	205	205	205	260	260	260
7000	119978	119.9071	4237	168.3	168.3	168.3	168.3	205	205	260	260	260	260
8000	133315	133.2364	4708	168.3	168.3	168.3	205	205	205	260	260	260	260

**Certificates & Declarations Quickair™ Aluminum Pipes & Fittings :**

ISO 9001:2015 CERTIFICATE	Attached - Refer Page No - 7
PIPE'S COATING QUALITY CERTIFICATE	Certified Qualicoat
GUARANTY CERTIFICATE	10 YEARS
CONFORMITY DECLARATION ACCORDING TO ASME	ASME B31.3-B31.1
CE CERTIFICATE	Attached - Refer Page No - 7
SAFETY FACTOR (BURST PRESSURE)	Attached - Refer Page No - 7
CHEMICAL COMPOSITION OF ALUMINIUM PIPE CERTIFICATE	Lab Test Certificate 3 <sup>Rd</sup> Party On Request
CONFIRMATION OF ALLOY 6063 T-5 OR 6063 T-6	Lab Test Certificate 3 <sup>Rd</sup> Party On Request

**Technical Details Quickair™ Aluminum Pipes :**

Standard Colour	Blue RAL 5012
Max Working Pressure	Up to 16 bar
Plant Testing Pressure 1 hour at 20°C	Up to 24 bar
For High Pressure Applications	Up to 40 bar Available (Contact Us) *
Vacuum	29.32" HG
Tolerance	Tolerance Std. IS2763, IS3965, EN-755-2
Continuous Service Temperature Limit	From -20°C Up to 90°C
Surface Finish	60 Microns
Pipe Material	Aluminum Alloy 6063 – T5 & 6063 – T6
Outer Surface Finish Of Pipe	Polyester powder paint
Inner Surface Finish Of Pipe	Chrome free conversion treatment
Resistance To	Ultraviolet rays, Mineral and synthetic , compressor lubricants, Environmental weather conditions Mechanical Shocks
Compatible Fluids	Compressed air , Vacuum , Inert Gas*
Fire Resistance	The system does not stroke or propagate any fires, High quality powder coated exterior
Other Colors Available	Yellow , White , Gray , Green (Other Colors Please Consult)

# CERTIFICATES



## CERTIFICATE OF REGISTRATION

This is to certify that the management system of

### CANARES AUTOMATION PRIVATE LIMITED

has been formally assessed by

**INTERNATIONAL CERTIFICATION & INSPECTION UK LTD.**

and found to comply with the requirements of

## ISO 9001:2015

(Quality Management Systems)

**Scope of Registration:**

DESIGN AND MANUFACTURE OF MODULAR PIPING AND FITTINGS, VALVES AND ACTUATORS, ROBOTICS & AUTOMATION, ALUMINIUM EXTRUSION, MODULAR CONVEYOR SYSTEMS, INDUSTRIAL WORKSTATIONS, ESD PRODUCTS, MEDICAL DEVICES, OXYGEN CONCENTRATORS, OXYGEN AND OTHER GAS GENERATORS & OTHER RELATED DEVICES / EQUIPMENTS / SYSTEMS.

**Registered Site (s):**

PLOT NO.- 85/0-A, INDUSTRIAL SUBURB, INDUSTRIAL LAYOUT, YESHWANTHPUR, BANGALORE, KARNATAKA - 560022, INDIA.

**:: Certificate No :: ICI/4792572/24**

**Date of initial registration:** 05 June 2024

**First Surveillance Audit on or before:** 05 May 2025

**Second Surveillance Audit on or before:** 05 May 2026

**Re-certification Due:** 04 June 2027

**This Certificate is property of ICI UK Ltd. and remains valid subject to satisfactory surveillance audits.**

*Peter Collins*  
Ex. Director  
International Certification & Inspection UK Limited.  
Kemp House, 180 City Road, London, EC1Y 2NX, United Kingdom




**To check validity of the certificate please visit at [www.ici-uk.co](http://www.ici-uk.co)**

This certification of registration is issued by International Certification & Inspection UK Limited accredited with Accreditation Board For Certification Bodies ([www.ab-cb.org](http://www.ab-cb.org)). This certificate remains the property of International Certification & Inspection UK Limited and must be returned upon request.



## Certificate of Compliance

# CE

We hereby declare that the technical files of all the items in each product group complies with the requirements of the Council Directive on **The Pressure Equipment Directive (PED) (2014/68/EU)**

**Certificate No.: CE-6741**

**Manufacturer :** CANARES AUTOMATION PRIVATE LIMITED

**Address :** PLOT NO.- 85/0-A, INDUSTRIAL SUBURB, INDUSTRIAL LAYOUT, YESHWANTHPUR, BANGALORE, KARNATAKA - 560022, INDIA.

**Products :** MODULAR PIPING AND FITTINGS, VALVES AND ACTUATORS, ROBOTICS & AUTOMATION, ALUMINIUM EXTRUSIONS, MODULAR CONVEYOR SYSTEMS, INDUSTRIAL WORKSTATIONS, ESD PRODUCTS, MEDICAL DEVICES, OXYGEN CONCENTRATORS, OXYGEN AND OTHER GAS GENERATORS & OTHER RELATED DEVICES / EQUIPMENTS / SYSTEMS. (AS PER ANNEXURE)

**Complies with the requirements applicable to it**

The quality system file has been assessed, approved and is subject to continuous surveillance according to the Council Directive on **The Pressure Equipment Directive (PED) (2014/68/EU)**

**This certificate is issued under the following conditions:**

- It applies only to the quality system maintained in the manufacture of above referenced models and it does not substitute the design or type-examination procedures, if requested.
- The certificate remains valid until the manufacturing conditions or the quality systems are changed.
- The certificate validity is conditioned by positive results or surveillance audits.

The CE mark as shown above can be used, under the responsibility of the manufacturer, after completion of an EC Declaration of conformity and compliance with all relevant EC Directives. The statement is based on a single evaluation of test report of one sample of above mentioned product. It does not imply an assessment of the whole production.

**Validity of this certificate can be verified at [www.ukcertifications.org.uk/verify](http://www.ukcertifications.org.uk/verify)**

**Date of Certification** 17th May 2025  
**1<sup>st</sup> Surveillance Audit Due** 16th May 2025  
**2<sup>nd</sup> Surveillance Audit Due** 16th May 2026  
**Certificate Expiry** 9th May 2027

*David ..*  
Authorized Signatory




This certificate is the property of UK Certification & Inspection Limited and shall be returned immediately on request.  
21, 25 Shelton Street, Covent Garden, London, WC2E 7HQ, United Kingdom  
Website: [www.ukcertifications.org.uk](http://www.ukcertifications.org.uk), email: [info@ukcertifications.org.uk](mailto:info@ukcertifications.org.uk)  
Company No. 11847551

## Quickair Aluminium Pipe Burst Test Certificates

### TEST REPORT

Aerospace Lab



---

**Name & Address of the Customer**  
M/s Canares Automation Private Limited  
Ground Floor and Mazenine Floor, 85/10, Industrial Layout, Industrial Suburb, Yeshwanthpur, Bengaluru Urban, Karnataka-560022

**Date of Receipt** : 13.01.2026  
**Report No** : 01046-ASL-26-1  
**Date of Testing** : 16.02.2026  
**Date of Issue of Report** : 18.02.2026  
**Page No** : 1 of 1

---

**Tested at:** Aerospace Lab, CMTI, Bengaluru

**Customer Ref. No & Date:** DC No: DC/25-26/02346 Date: 13.01.2026

**Unit under Test:** Aluminium Pipe- 25MM  
**Make:** Canares Automation **Part No:** Nil **Qty:** 1 No.  
**Condition of the sample as on receipt:** Satisfactory/ /Moderate/ Good

**Type of test:** Hydro-Static Pressure Test

**Test conditions**  
**Test Pressure** : 130 bar **Test Medium** : Hydraulic Oil - MIL-PRF 5606H  
**Test Temperature** : Room Temperature **Test Duration** : 10minutes

Details of the Equipment/Instruments used for Testing							
Sl No.	Nomenclature	Make	Model/Range	Serial No.	ID Number	Certificate Number	Validity
01	Pressure Sensor with Indicator	Wika	S-20 0-400 bar	1A0089E9	ASL/CMT/TP TD/07	SS/25/N1810-02	26.10.2026
02	Digital Stop Watch	LAOPA O	As per Model / YS-528L	-----	ASL/CMT/IS W/01	SS/25/S1810-11	26.10.2026

---

**Results:** The test results are shown below.

Sl No.	Descriptions	Room Temperature,	Test Pressure	Duration	Remarks
01.	Aluminium Pipe- 25MM	24.5°C	130 bar	10 minutes	No Leakage / Failure observed during the test

**Note:** The aluminium pipe- 25MM withstood an applied pressure of 130 bar for 10 minutes without any leakage/failure.


**Tested by:** Girisha C V (Test Engineer) **Authorized by:** Tom Thampy (Technical Manager)

\*\*\*End of Report\*\*\*

केन्द्रीय विनिर्माणकारी प्रौद्योगिकी संस्थान  
CENTRAL MANUFACTURING TECHNOLOGY INSTITUTE  
Tumkur Road, Bengaluru - 560022, India | [www.cmti.res.in](http://www.cmti.res.in) | [amp@cmti.res.in](mailto:amp@cmti.res.in) | [labservices@cmti.res.in](mailto:labservices@cmti.res.in)  
Reporting of any discrepancies and collection of tested sample shall be made within 15 days from the date of report.  
This Certificate refers only to the items supplied and may not be reproduced except in full without written permission from the Director, CMTI

### TEST REPORT

Aerospace Lab



---

**Name & Address of the Customer**  
M/s Canares Automation Private Limited  
Ground Floor and Mazenine Floor, 85/10, Industrial Layout, Industrial Suburb, Yeshwanthpur, Bengaluru Urban, Karnataka-560022

**Date of Receipt** : 13.01.2026  
**Report No** : 01046-ASL-26-2  
**Date of Testing** : 16.02.2026  
**Date of Issue of Report** : 17.02.2026  
**Page No** : 1 of 1

---

**Tested at:** Aerospace Lab, CMTI, Bengaluru

**Customer Ref. No & Date:** DC No: DC/25-26/02346 Date: 13.01.2026

**Unit under Test:** Aluminium Pipe- 40MM  
**Make:** Canares Automation **Part No:** Nil **Qty:** 1 No.  
**Condition of the sample as on receipt:** Satisfactory/ /Moderate/ Good

**Type of test:** Hydro-Static Pressure Test

**Test conditions**  
**Test Pressure** : 130 bar **Test Medium** : Hydraulic Oil - MIL-PRF 5606H  
**Test Temperature** : Room Temperature **Test Duration** : 10minutes

Details of the Equipment/Instruments used for Testing							
Sl No.	Nomenclature	Make	Model/Range	Serial No.	ID Number	Certificate Number	Validity
01	Pressure Sensor with Indicator	Wika	S-20 0-400 bar	1A0089E9	ASL/CMT/TP TD/07	SS/25/N1810-02	26.10.2026
02	Digital Stop Watch	LAOPA O	As per Model / YS-528L	-----	ASL/CMT/IS W/01	SS/25/S1810-11	26.10.2026

---

**Results:** The test results are shown below.

Sl No.	Descriptions	Room Temperature,	Test Pressure	Duration	Remarks
01.	Aluminium Pipe- 40MM	24.5°C	130 bar	10 minutes	No Leakage / Failure observed during the test

**Note:** The aluminium pipe- 40MM withstood an applied pressure of 130 bar for 10 minutes without any leakage/failure.


**Tested by:** Girisha C V (Test Engineer) **Authorized by:** Tom Thampy (Technical Manager)

\*\*\*End of Report\*\*\*

केन्द्रीय विनिर्माणकारी प्रौद्योगिकी संस्थान  
CENTRAL MANUFACTURING TECHNOLOGY INSTITUTE  
Tumkur Road, Bengaluru - 560022, India | [www.cmti.res.in](http://www.cmti.res.in) | [amp@cmti.res.in](mailto:amp@cmti.res.in) | [labservices@cmti.res.in](mailto:labservices@cmti.res.in)  
Reporting of any discrepancies and collection of tested sample shall be made within 15 days from the date of report.  
This Certificate refers only to the items supplied and may not be reproduced except in full without written permission from the Director, CMTI

### TEST REPORT

Aerospace Lab



---

**Name & Address of the Customer**  
M/s Canares Automation Private Limited  
Ground Floor and Mazenine Floor, 85/10, Industrial Layout, Industrial Suburb, Yeshwanthpur, Bengaluru Urban, Karnataka-560022

**Date of Receipt** : 13.01.2026  
**Report No** : 01046-ASL-26-3  
**Date of Testing** : 16.02.2026  
**Date of Issue of Report** : 18.02.2026  
**Page No** : 1 of 1

---

**Tested at:** Aerospace Lab, CMTI, Bengaluru

**Customer Ref. No & Date:** DC No: DC/25-26/02346 Date: 13.01.2026

**Unit under Test:** Aluminium Pipe- 50MM  
**Make:** Canares Automation **Part No:** Nil **Qty:** 1 No.  
**Condition of the sample as on receipt:** Satisfactory/ /Moderate/ Good

**Type of test:** Hydro-Static Pressure Test

**Test conditions**  
**Test Pressure** : 130 bar **Test Medium** : Hydraulic Oil - MIL-PRF 5606H  
**Test Temperature** : Room Temperature **Test Duration** : 10minutes

Details of the Equipment/Instruments used for Testing							
Sl No.	Nomenclature	Make	Model/Range	Serial No.	ID Number	Certificate Number	Validity
01	Pressure Sensor with Indicator	Wika	S-20 0-400 bar	1A0089E9	ASL/CMT/TP TD/07	SS/25/N1810-02	26.10.2026
02	Digital Stop Watch	LAOPA O	As per Model / YS-528L	-----	ASL/CMT/IS W/01	SS/25/S1810-11	26.10.2026

---

**Results:** The test results are shown below.

Sl No.	Descriptions	Room Temperature,	Test Pressure	Duration	Remarks
01.	Aluminium Pipe- 50MM	24.5°C	130 bar	10 minutes	Leakage observed at 101 bar pressure at welding joint during the test

**Note:** During pressure testing, the 50 mm aluminium pipe exhibited leakage at the welded joints at 101 bar, against the intended test pressure of 130 bar.

**Tested by:** Girisha C V (Test Engineer) **Authorized by:** Tom Thampy (Technical Manager)

\*\*\*End of Report\*\*\*

केन्द्रीय विनिर्माणकारी प्रौद्योगिकी संस्थान  
CENTRAL MANUFACTURING TECHNOLOGY INSTITUTE  
Tumkur Road, Bengaluru - 560022, India | [www.cmti.res.in](http://www.cmti.res.in) | [amp@cmti.res.in](mailto:amp@cmti.res.in) | [labservices@cmti.res.in](mailto:labservices@cmti.res.in)  
Reporting of any discrepancies and collection of tested sample shall be made within 15 days from the date of report.  
This Certificate refers only to the items supplied and may not be reproduced except in full without written permission from the Director, CMTI

“Zero Thread Zero Leakage “

“Connect with Confidence”

08

# Compressed Air Piping Aluminum To Engineering Plastic Cap Series

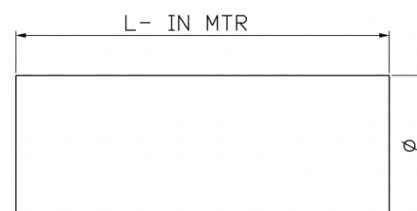
## Technical Details Quickair™ Aluminum Pipe Fittings Aluminum To Engineering Plastic Series :

Fitting Standard Colour	Gray RAL 7012
Max Working Pressure	Up to 16 bar
Plant Testing Pressure 1 hour at 30°C	Up to 24 bar
Technology	Push Fit *
For High Pressure Applications	Up to 40 bar Available (On Request) *
Body	Aluminium
Steel Ring	Stainless Steel
O Ring	EPDM , HNBR , VITON *
Cap , Bush , Sleeves	PA 6 Engineering Plastic
Non-Flammable materials	UL94HB
Working Temperature	From -20°C Up to 90°C
Threading Type	BSP (NPT On Request) *

### Seamless Aluminum Pipe



#### Other Colors



Part Number	Size (MM)	Size (Inches)	Thickness (MM)	Length(Meter)	Pressure Rating (Bar)	Weight Per Meter (Kg)
AP24200016	20	3/4"	1.25	6	16	1.194
AP24250016	25	1"	1.58	6	16	1.794
AP24320016	32	1-1/4"	1.64	6	16	2.472
AP24400016	40	1-1/2"	2.07	6	16	3.870
AP24500016	50	2"	2.04	6	16	4.884
AP26300016	63	2-1/2"	2.06	6	16	6.210

Part Number	Size (MM)	Size (Inches)	Thickness (MM)	Length(Meter)	Pressure Rating (Bar)	Weight Per Meter (Kg)
AP24200013	20	3/4"	1.25	3	16	0.597
AP24250013	25	1"	1.58	3	16	0.897
AP24320013	32	1-1/4"	1.64	3	16	1.236
AP24400013	40	1-1/2"	2.07	3	16	1.935
AP24500013	50	2"	2.04	3	16	2.442
AP26300013	63	2-1/2"	2.06	3	16	3.105

To Find Part Number For Other Color : 40mm Blue pipe: [AP24400016](#), For Yellow [AP24400026](#), For Grey [AP24400036](#), For Green [AP24400046](#).

# Fittings Aluminum To Engineering Plastic Cap Series

## Equal Pipe To Pipe Connector



Part Number	Size (MM)	Size (Inches)	Pressure Rating (Bar)
PP242000	20	3/4"	16
PP242500	25	1"	16
PP243200	32	1-1/4"	16
PP244000	40	1-1/2"	16
PP245000	50	2"	16
PP246300	63	2-1/2"	16

## Equal Tee Connector



Part Number	Size (MM)	Size (Inches)	Pressure Rating (Bar)
ET242000	20	3/4"	16
ET242500	25	1"	16
ET243200	32	1-1/4"	16
ET244000	40	1-1/2"	16
ET245000	50	2"	16
ET246300	63	2-1/2"	16

## Equal Elbow Connector



Part Number	Size (MM)	Size (Inches)	Pressure Rating (Bar)
EL242000	20	3/4"	16
EL242500	25	1"	16
EL243200	32	1-1/4"	16
EL244000	40	1-1/2"	16
EL245000	50	2"	16
EL246300	63	2-1/2"	16

## End Cap Connector



Part Number	Size (MM)	Size (Inches)	Pressure Rating (Bar)
EC242000	20	3/4"	16
EC242500	25	1"	16
EC243200	32	1-1/4"	16
EC244000	40	1-1/2"	16
EC245000	50	2"	16
EC246300	63	2-1/2"	16

## 45° Elbow



Part Number	Size (MM)	Size (Inches)	Pressure Rating (Bar)
AE242000	20	3/4"	16
AE242500	25	1"	16
AE243200	32	1-1/4"	16
AE244000	40	1-1/2"	16
AE245000	50	2"	16
AE246300	63	2-1/2"	16

# Fittings Aluminum To Engineering Plastic Cap Series

## Droplet Tube To Tube



Part Number	Size (MM)	Size (Inches)	Pressure Rating (Bar)
MD242520	25 X 20	1" X 3/4"	16
MD243220	32 X 20	1 -1/4" X 3/4"	16
MD243225	32 X 25	1-1/4" X 1"	16
MD244020	40 X 20	1-1/2" X 2"	16
MD244025	40 X 25	1-1/2" X 1"	16
MD245020	50 X 20	2" X 3/4"	16
MD245025	50 X 25	2" X 1"	16
MD246320	63 X 20	2-1/2" X 3/4"	16
MD246325	63 X 25	2-1/2" X 2"	16

## Droplet Female Thread



Part Number	Size (MM) X (INCHES)	BSP(INCHES)	Pressure Rating (Bar)
FD242505	25 X 0.5"	1/2"	16
FD242507	25 X 0.7"	3/4"	16
FD243205	32 X 0.5"	1/2"	16
FD243207	32 X 0.7"	3/4"	16
FD243210	32 X 1"	1"	16
FD244005	40 X 0.5"	1/2"	16
FD244007	40 X 0.7"	3/4"	16
FD244010	40 X 1"	1"	16
FD245005	50 X 0.5"	1/2"	16
FD245007	50 X 0.7"	3/4"	16
FD245010	50 X 1"	1"	16
FD246305	63 X 0.5"	1/2"	16
FD246307	63 X 0.7"	3/4"	16
FD246310	63 X 1"	1"	16

## Male Connector



Part Number	Size (MM)	BSP (")	Pressure Rating (Bar)
MC242005	20 X 0.5"	1/2"	16
MC242007	20 X 0.7"	3/4"	16
MC242505	25 X 0.5"	1/2"	16
MC242507	25 X 0.7"	3/4"	16
MC242510	25 X 1"	1"	16
MC243210	32 X 1"	1"	16
MC243212	32 X 1-1/4"	1 1/4"	16
MC244010	40 X 1"	1"	16
MC244015	40 X 1.5"	1 1/2"	16
MC245015	50 X 1.5"	1 1/2"	16
MC245020	50 X 2"	2"	16
MC246320	63 X 2"	2"	16
MC246325	63 X 2.5"	2 1/2"	16

# Fittings Aluminum To Engineering Plastic Cap Series

## Reduced Tee Connector



Part Number	Size (MM)	Size (Inches)	Pressure Rating (Bar)
RT242520	25 X 20 X 25	1" X 3/4" X 1"	16
RT243220	32 X 20 X 32	1-1/4" X 3/4" X 1-1/4"	16
RT243225	32 X 25 X 32	1-1/4" X 1" X 1-1/4"	16
RT244020	40 X 20 X 40	1-1/2" X 3/4" X 1-1/2"	16
RT244025	40 X 25 X 40	1-1/2" X 1" X 1-1/2"	16
RT244032	40 X 32 X 40	1-1/2" X 1-1/4" X 1-1/2"	16
RT245020	50 X 20 X 50	2" X 3/4" X 2"	16
RT245025	50 X 25 X 50	2" X 1" X 2"	16
RT245032	50 X 32 X 50	2" X 1-1/4" X 2"	16
RT245040	50 X 40 X 50	2" X 1-1/2" X 2"	16
RT246320	63 X 20 X 63	2-1/2" X 3/4" X 2-1/2"	16
RT246325	63 X 25 X 63	2-1/2" X 1" X 2-1/2"	16
RT246332	63 X 32 X 63	2-1/2" X 1-1/4" X 2-1/2"	16
RT246340	63 X 40 X 63	2-1/2" X 1-1/2" X 2-1/2"	16
RT246350	63 X 50 X 63	2-1/2" X 2" X 2-1/2"	16

## Reduced Female Thread Tee Connector



Part Number	Size (MM X INCH X MM)	BSP(“)	Pressure Rating (Bar)
FT242005	20 X 0.5" X 20	0.5"	16
FT242007	20 X 0.7" X 20	0.7"	16
FT242505	25 X 0.5" X 25	0.5"	16
FT242507	25 X 0.7" X 25	0.7"	16
FT242510	25 X 1" X 25	1"	16
FT243205	32 X 0.5" X 32	0.5"	16
FT243207	32 X 0.7" X 32	0.7"	16
FT243210	32 X 1" X 32	1"	16
FT244005	40 X 0.5" X 40	0.5"	16
FT244007	40 X 0.7" X 40	0.7"	16
FT244010	40 X 1" X 40	1"	16
FT245005	50 X 0.5" X 50	0.5"	16
FT245007	50 X 0.7" X 50	0.7"	16
FT245010	50 X 1" X 50	1"	16
FT246305	63 X 0.5" X 63	0.5"	16
FT246307	63 X 0.7" X 63	0.7"	16
FT246310	63 X 1" X 63	1"	16

## Reducer Tube To Tube



Part Number	Size (MM)	Pressure Rating (Bar)
RD242520	25 X 20	16
RD243220	32 X 20	16
RD243225	32 X 25	16
RD244020	40 X 20	16
RD244025	40 X 25	16
RD244032	40 X 32	16
RD245020	50 X 20	16
RD245025	50 X 25	16
RD245032	50 X 32	16
RD245040	50 X 40	16
RD246320	63 X 20	16
RD246325	63 X 25	16
RD246332	63 X 32	16
RD246340	63 X 40	16
RD246350	63 X 50	16

## Fittings Aluminum To Engineering Plastic Cap Series

### Reduced Elbow



Part Number	Size (MM)	Size (Inches)	Pressure Rating (Bar)
RE242520	25 X 20	1" X 3/4"	16
RE243220	32 X 20	1-1/4" X 3/4"	16
RE243225	32 X 25	1-1/4" X 1"	16
RE244020	40 X 20	1-1/2" X 3/4"	16
RE244025	40 X 25	1-1/2" X 1"	16
RE244032	40 X 32	1-1/2" X 1-1/4"	16
RE245020	50 X 20	2" X 3/4"	16
RE245025	50 X 25	2" X 1"	16
RE245032	50 X 32	2" X 1-1/4"	16
RE245040	50 X 40	2" X 1-1/2"	16
RE246320	63 X 20	2-1/2" X 3/4"	16
RE246325	63 X 25	2-1/2" X 1"	16
RE246332	63 X 32	2-1/2" X 1-1/4"	16
RE246340	63 X 40	2-1/2" X 1-1/2"	16
RE246350	63 X 50	2-1/2" X 2"	16

### Flanged End



Part Number	Size (Inches) x (MM)	Pressure Rating (Bar)
FE244000	1 1/2 " x 40MM	16
FE245000	2 " x 50MM	16
EF246300	2 1/2 " x 63MM	16

You can connect Aluminum Push Fit Series fittings to this flange.

## Compressed Air Piping Integrated Series

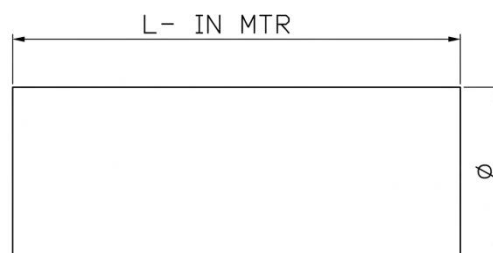
### Technical Details Quickair™ Aluminum Pipe Fittings Aluminum Integrated Series :

Fitting Standard Colour	Gray RAL 7012 (Body Only)
Max Working Pressure	Up to 16 bar
Plant Testing Pressure 1 hour at 30°C	Up to 24 bar
Technology	Coupler Connection
For High Pressure Applications	Up to 40 bar Available (On Request) *
Body	Aluminium
O Ring	EPDM , HNBR , VITON *
Non-Flammable materials	UL94HB
Working Temperature	From -20°C Up to 90°C
Threading Type	BSP (NPT On Request) *

### Seamless Grooving Aluminum Pipe



Other Colors



Part Number	Size (MM)	Size (Inches)	Thickness (MM)	Length(Meter)	Pressure Rating (Bar)	Weight Per Meter (Kg)
CAP24200016	20	3/4"	1.25	6	16	1.194
CAP24250016	25	1"	1.58	6	16	1.794
CAP24320016	32	1-1/4"	1.64	6	16	2.472
CAP24400016	40	1-1/2"	2.07	6	16	3.870
CAP24500016	50	2"	2.04	6	16	4.884
CAP24630016	63	2-1/2"	2.06	6	16	6.210
CAP24760016	76	-	2.54	6	16	7.500
CAP24900016	90	3"	2.59	6	16	11.100

Part Number	Size (MM)	Size (Inches)	Thickness (MM)	Length(Meter)	Pressure Rating (Bar)	Weight Per Meter (Kg)
CAP24200013	20	3/4"	1.25	3	16	0.597
CAP24250013	25	1"	1.58	3	16	0.897
CAP24320013	32	1-1/4"	1.64	3	16	1.236
CAP24400013	40	1-1/2"	2.07	3	16	1.935
CAP24500013	50	2"	2.04	3	16	2.442
CAP24630013	63	2-1/2"	2.06	3	16	3.105
CAP24760013	76	-	2.54	3	16	3.750
CAP24900013	90	3"	2.59	3	16	5.550

To Find Part Number For Other Color : 40mm Blue pipe: [CAP24400016](#), For Yellow [CAP24400026](#), For Grey [CAP24400036](#), For Green [CAP24400046](#).

## Compact Coupler



Part Number	Size (MM)	Size (Inches)	Pressure Rating (Bar)
PC16242000	20	3/4"	16
PC16242500	25	1"	16
PC16244000	40	1-1/2"	16
PC16245000	50	2"	16
PC16246300	63	2-1/2"	16
PC16247600	76	3"	16
PC16243000	90	3-1/2"	16

## Integrated Tee



Part Number	Size (MM)	Size (Inches)	Pressure Rating (Bar)
IT16242000	20	3/4"	16
IT16242500	25	1"	16
IT16244000	40	1-1/2"	16
IT16245000	50	2"	16
IT16246300	63	2-1/2"	16
IT16247600	76	3"	16
IT16243000	90	3-1/2"	16

Quickair system's special integrated tee stands out because it does not require additional couplers on all three sides..

## Integrated Elbow



Part Number	Size (MM)	Size (Inches)	Pressure Rating (Bar)
IE16242000	20	3/4"	16
IE16242500	25	1"	16
IE16244000	40	1-1/2"	16
IE16245000	50	2"	16
IE16246300	63	2-1/2"	16
IE16247600	76	3"	16
IE16243000	90	3-1/2"	16

Quickair system's special integrated tee stands out because it does not require additional couplers on all two sides.

## End Cap



Part Number	Size (MM)	Size (Inches)	Pressure Rating (Bar)
EC16242000	20	3/4"	16
EC16242500	25	1"	16
EC16244000	40	1-1/2"	16
EC16245000	50	2"	16
EC16246300	63	2-1/2"	16
EC16247600	76	3"	16
EC16243000	90	3-1/2"	16

# Aluminum Fittings Integrated Series

## Male Connector



Part Number	Size	BSP	Pressure Rating (Bar)
MC16242005	20MM X 0.5"	1/2"	16
MC16242007	20MM X 0.7"	3/4"	16
MC16242505	25MM X 0.5"	1/2"	16
MC16242507	25MM X 0.7"	3/4"	16
MC16242510	25MM X 1"	1"	16
MC16244010	40MM X 1"	1"	16
MC16244015	40MM X 1.5"	1-1/2"	16
MC16245020	50MM X 2"	2"	16
MC16246320	63MM X 2"	2"	16
MC16246325	63MM X 2.5"	2-1/2"	16
MC16247625	76MM X 2.5"	2-1/2"	16
MC16247630	76MM X 3"	3"	16
MC16243025	90MM X 2.5"	2-1/2"	16
MC16243030	90MM X 3"	3"	16

## 45° Elbow



Part Number	Size (MM)	Size (Inches)	Pressure Rating (Bar)
AE16242000	20	3/4"	16
AE16242500	25	1"	16
AE16244000	40	1-1/2"	16
AE16245000	50	2"	16
AE16246300	63	2-1/2"	16
AE16247600	76	3"	16
AE16243000	90	3-1/2"	16

## 4 Way Tee



Part Number	Size (MM)	Size (Inches)	Pressure Rating (Bar)
4T16242000	20	3/4"	16
4T16242500	25	1"	16
4T16244000	40	1-1/2"	16
4T16245000	50	2"	16
4T16246300	63	2-1/2"	16
4T16247600	76	3"	16
4T16243000	90	3-1/2"	16

## Saddles



Part Number	Size (MM)	Size (Inches)	Pressure Rating (Bar)
SD242520	25 X 20	1" X 3/4"	16
SD244020	40 X 20	2" X 3/4"	16
SD244025	40 X 25	2" X 1"	16
SD245020	50 X 20	1-1/2" X 3/4"	16
SD245025	50 X 25	1-1/2" X 1"	16
SD246320	63 X 20	2-1/2" X 3/4"	16
SD246325	63 X 25	2-1/2" X 1"	16
SD247620	76 X 20	3" X 3/4"	16
SD247625	76 X 25	3" X 1"	16
SD243020	90 X 20	3-1/2" X 3/4"	16
SD243025	90 X 25	3-1/2" X 1"	16

## Female Threaded Saddles



Part Number	Size (MM)	BSP (Inches)	Pressure Rating (Bar)
SDF242505	25	1/2"	16
SDF242507	25	3/4"	16
SDF244005	40	1/2"	16
SDF244007	40	3/4"	16
SDF244010	40	1.0"	16
SDF245005	50	1/2"	16
SDF245007	50	3/4"	16
SDF245010	50	1.0"	16
SDF246305	63	1/2"	16
SDF246307	63	3/4"	16
SDF246310	63	1.0"	16
SDF247605	76	1/2"	16
SDF247607	76	3/4"	16
SDF247610	76	1.0"	16
SDF243005	90	1/2"	16
SDF243007	90	3/4"	16
SDF243010	90	1.0"	16

## Flanged End



You can connect Only Integrated Series fittings to this flange

Part Number	Size (Inches) x (MM)	Pressure Rating (Bar)
FE16244000	1 1/2 " x 40MM	16
FE16245000	2 " x 50MM	16
FE16246300	2 1/2 " x 63MM	16
FE16247600	2 1/2 " x 76MM	16
FE16243000	3 " x 90MM	16
FE16244130	4 " x 90MM	16
FE16246030	6 " x 90MM	16

## Reducer For Push Fit



You can connect From Integrated Series fittings to Aluminum Push Fit Series.

Part Number	Size (MM)	Pressure Rating (Bar)
RD247620	76MM X 20MM	16
RD247625	76MM X 20MM	16
RD247632	76MM X 32MM	16
RD247640	76MM X 40MM	16
RD247650	76MM X 50MM	16
RD247663	76MM X 63MM	16
RD243020	90MM X 20MM	16
RD243025	90MM X 25MM	16
RD243032	90MM X 32MM	16
RD243040	90MM X 40MM	16
RD243050	90MM X 50MM	16
RD243063	90MM X 63MM	16

# Aluminum Fittings Integrated Series

## Reducer



You can connect Only Integrated Series fittings To This Reducer.

Part Number	Size (MM)	Pressure Rating (Bar)
RD16242520	25MM X 20MM	16
RD16244020	40MM X 20MM	16
RD16244025	40MM X 25MM	16
RD16245020	50MM X 20MM	16
RD16245025	50MM X 25MM	16
RD16245040	50MM X 40MM	16
RD16246320	63MM X 20MM	16
RD16246325	63MM X 25MM	16
RD16246340	63MM X 40MM	16
RD16246350	63MM X 50MM	16
RD16247620	76MM X 20MM	16
RD16247625	76MM X 25MM	16
RD16247640	76MM X 40MM	16
RD16247650	76MM X 50MM	16
RD16247663	76MM X 63MM	16
RD16243020	90MM X 20MM	16
RD16243025	90MM X 25MM	16
RD16243040	90MM X 40MM	16
RD16243050	90MM X 50MM	16
RD16243063	90MM X 63MM	16
RD16243076	90MM X 76MM	16

## Reduced Tee



You can connect Only Integrated Series fittings To This Reduced Tee.

Part Number	Size (MM)	Pressure Rating (Bar)
RT16247620	76MM X 20MM	16
RT16247625	76MM X 25MM	16
RT16247632	76MM X 32MM	16
RT16247640	76MM X 40MM	16
RT16247650	76MM X 50MM	16
RT16247663	76MM X 63MM	16
RT16243020	90MM X 20MM	16
RT16243025	90MM X 25MM	16
RT16243032	90MM X 32MM	16
RT16243040	90MM X 40MM	16
RT16243050	90MM X 50MM	16
RT16243063	90MM X 63MM	16
RT16243076	90MM X 76MM	16

## Reduced Tee For Push Fit Series



You can connect Only Integrated Series fittings To Aluminum Push Fit Series This Reduced Tee.

Part Number	Size (MM)	Pressure Rating (Bar)
RT247620	76MM X 20MM	16
RT247625	76MM X 25MM	16
RT247632	76MM X 32MM	16
RT247640	76MM X 40MM	16
RT247650	76MM X 50MM	16
RT247663	76MM X 63MM	16
RT243020	90MM X 20MM	16
RT243025	90MM X 25MM	16
RT243032	90MM X 32MM	16
RT243040	90MM X 40MM	16
RT243050	90MM X 50MM	16
RT243063	90MM X 63MM	16

## Compressed Air Piping Coupler Series

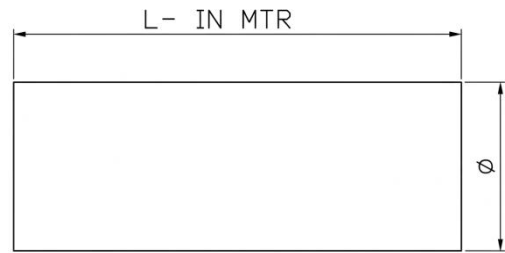
### Technical Details Quickair™ Aluminum Pipe Fittings Aluminum Coupler Series :

Fitting Standard Colour	Gray RAL 7012 (Body Only)
Max Working Pressure	Up to 16 bar
Plant Testing Pressure 1 hour at 30°C	Up to 24 bar
Technology	Coupler Connection
For High Pressure Applications	Up to 40 bar Available (On Request) *
Body	Aluminium
O Ring	EPDM , HNBR , VITON *
Non-Flammable materials	UL94HB
Working Temperature	From -20°C Up to 90°C
Threading Type	BSP (NPT On Request) *

### Seamless Grooving Aluminum Pipe



Other Colors



Part Number	Size (MM)	Size (Inches)	Thickness (MM)	Length(Meter)	Pressure Rating (Bar)	Weight Per Meter (Kg)
CAP24410016	113.5	4"	2.07	6	16	16.96
CAP24600016	168.3	6"	2.56	6	16	37.71
CAP24800016	205	8"	3.58	6	16	51.16
CAP241000016	260	10"	5	6	16	65.24
CAP241200016	290	12"	5	6	16	65.24

Part Number	Size (MM)	Size (Inches)	Thickness (MM)	Length(Meter)	Pressure Rating (Bar)	Weight Per Meter (Kg)
CAP24410016	113.5	4"	2.07	3	16	8.48
CAP24600016	168.3	6"	2.56	3	16	18.85
CAP24800016	205	8"	3.58	3	16	25.58
CAP241000016	260	10"	5	3	16	32.12
CAP241200016	290	12"	5	3	16	32.12

To Find Part Number For Other Color : 113.5mm Blue pipe: [CAP24410016](#) , For Yellow [CAP24410026](#)  
 For Grey [CAP24410036](#) , For Green [CAP24410046](#)

# Aluminum Fittings Coupler Series

## Coupler



Part Number	Size (MM)	Size (Inches)	Pressure Rating (Bar)
PC244100	113.5	4"	16
PC246000	168.3	6"	16
PC248000	205	8"	16
PC2410000	260	10"	16
PC2412000	290	12"	16

## Equal Elbow



Part Number	Size (MM)	Size (Inches)	Pressure Rating (Bar)
EL244100	113.5	4"	16
EL246000	168.3	6"	16
EL248000	205	8"	16
EL246000	260	10"	16
EL248000	290	12"	16

## Equal Tee



Part Number	Size (MM)	Size (Inches)	Pressure Rating (Bar)
ET244100	113.5	4"	16
ET246000	168.3	6"	16
ET248000	205	8"	16
ET2410000	260	10"	16
ET2412000	290	12"	16

## End Cap



Part Number	Size (MM)	Size (Inches)	Pressure Rating (Bar)
EC244100	113.5	4"	16
EC246000	168.3	6"	16
EC248000	205	8"	16
EC2410000	260	10"	16
EC2412000	290	12"	16

## Saddles



Part Number	Size (MM)	Size (Inches)	Pressure Rating (Bar)
SD244120	113.5 X 20	4" X 3/4"	16
SD244125	113.5 X 25	4 X 1"	16
SD246020	168.3 X20	6" X 3/4"	16
SD246025	168.3 X25	6" X 1"	16
SD248020	205 X 20	8" X 3/4"	16
SD248025	205 X 25	8" X 1"	16
SD2410020	260 X 20	10" X 3/4"	16
SD2410025	260 X 25	10" X 1"	16

# Aluminum Fittings Coupler Series

## Female Threaded Saddle



Part Number	Size (MM)	BSP (Inches)	Pressure Rating (Bar)
SDF244105	113.5	1/2"	16
SDF244107	113.5	3/4"	16
SDF244110	113.5	1.0"	16
SDF246005	168.3	1/2"	16
SDF246007	168.3	3/4"	16
SDF246010	168.3	1.0"	16
SDF248005	205	1/2"	16
SDF248007	205	3/4"	16
SDF248010	205	1.0"	16
SDF2410007	260	3/4"	16
SDF2410010	260	1.0"	16

## Flanged End



You can connect Only Coupler Series fittings to this flange.

Part Number	Size (Inches) x (MM)	Pressure Rating (Bar)
FE243041	3 " x 113MM	16
FE244100	4 " x 113MM	16
FE246041	6 " x 113MM	16
FE244160	4 " x 168MM	16
FE246000	6 " x 168MM	16
FE248060	8 " x 168MM	16
FE248000	8 " x 205MM	16
FE2410000	10" x 260MM	16

## Reducer For Push Fit Series



You can connect From Coupler Series fittings To Aluminum Push Fit Series .

Part Number	Size (MM)	Pressure Rating (Bar)
RD244140	113.5MM x 40MM	16
RD244150	113.5MM x 50MM	16
RD244163	113.5MM x 63MM	16
RD246040	168.3MM x 40MM	16
RD246050	168.3MM x 50MM	16
RD246063	168.3MM x 63MM	16
RD248040	205MM x 40MM	16
RD248050	205MM x 50MM	16
RD248063	205MM x 63MM	16
RD246050	168.3MM x 50MM	16
RD246063	168.3MM x 63MM	16
RD248040	205MM x 40MM	16
RD248050	205MM x 50MM	16
RD248063	205MM x 63MM	16
RD2410040	260MM x 40MM	16
RD2410050	260MM x 50MM	16
RD2410063	260MM x 63MM	16

# Aluminum Fittings Coupler Series

## Reducer For Integrated Series



You can connect Only Coupler Series fittings To Integrated Series.

Part Number	Size (MM)	Pressure Rating (Bar)
RD16244120	113.5MM X 20MM	16
RD16244125	113.5MM X 25MM	16
RD16244140	113.5MM X 40MM	16
RD16244150	113.5MM X 50MM	16
RD16244163	113.5MM X 63MM	16
RD16244176	113.5MM X 76MM	16
RD16244130	113.5MM X 90MM	16
RD16246020	168.3MM X 20MM	16
RD16246025	168.3MM X 25MM	16
RD16246040	168.3MM X 40MM	16
RD16246050	168.3MM X 50MM	16
RD16246063	168.3MM X 63MM	16
RD16246076	168.3MM X 76MM	16
RD16246030	168.3MM X 90MM	16
RD16248040	205MM X 40MM	16
RD16248050	205MM X 50MM	16
RD16248063	205MM X 63MM	16
RD16248076	205MM X 76MM	16
RD16248030	205MM X 90MM	16
RD162410040	260MM X 40MM	16
RD162410050	260MM X 50MM	16
RD162410063	260MM X 63MM	16
RD162410076	260MM X 76MM	16
RD162410030	260MM X 90MM	16

## Reducer For Coupler Series



You can connect Only Coupler Series fittings To Coupler Series.

Part Number	Size (MM)	Pressure Rating (Bar)
RD246041	168.3MM x 113.5MM	16
RD248041	205MM x 113.5MM	16
RD248060	205MM x 168.3MM	16
RD2410041	260MM x 113.5MM	16
RD2410060	260MM x 168.3MM	16
RD2410080	260MM x 205MM	16

## Reduced Tee For Coupler Series



You can connect Only Coupler Series fittings To Coupler Series.

Part Number	Size (MM)	Pressure Rating (Bar)
RT246041	168.3MM x 113.5MM	16
RT248041	205MM x 113.5MM	16
RT248060	205MM x 168.3MM	16
RT2410041	260MM x 113.5MM	16
RT2410060	260MM x 168.3MM	16
RT2410080	260MM x 205MM	16

## Reduced Tee For Push Fit Series



You can connect Only Coupler Series fittings To Aluminum Push Fit Series This Reduced Tee.

Part Number	Size (MM)	Pressure Rating (Bar)
RT244140	113.5MM x 40MM	16
RT244150	113.5MM x 50MM	16
RT244163	113.5MM x 63MM	16
RT246040	168.3MM x 40MM	16
RT246050	168.3MM x 50MM	16
RT246063	168.3MM x 63MM	16
RT248040	205MM x 40MM	16
RT248050	205MM x 50MM	16
RT248063	205MM x 63MM	16
RT2410040	260MM x 40MM	16
RT2410050	260MM x 50MM	16
RT2410063	260MM x 63MM	16

## Reduced Tee For Integrated Series



You can connect Only Integrated Series fittings To This Reduced Tee.

Part Number	Size (MM)	Pressure Rating (Bar)
RT16244125	113.5MM x 25MM	16
RT16244140	113.5MM x 40MM	16
RT16244150	113.5MM x 50MM	16
RT16244163	113.5MM x 63MM	16
RT16244176	113.5MM x 76MM	16
RT16244130	113.5MM x 90MM	16
RT16246025	168.3MM x 25MM	16
RT16246040	168.3MM x 40MM	16
RT16246050	168.3MM x 50MM	16
RT16246063	168.3MM x 63MM	16
RT16246076	168.3MM x 76MM	16
RT16246030	168.3MM x 90MM	16
RT16248025	205MM x 25MM	16
RT16248040	205MM x 40MM	16
RT16248050	205MM x 50MM	16
RT16248063	205MM x 63MM	16
RT16248076	205MM x 76MM	16
RT16248030	205MM x 90MM	16
RT162410025	260MM x 25MM	16
RT162410040	260MM x 40MM	16
RT162410050	260MM x 50MM	16
RT162410063	260MM x 63MM	16
RT162410076	260MM x 76MM	16
RT162410030	260MM x 90MM	16

# Wall Brackets And Manifolds

## Wall Bracket Single Way Without Ball Valve



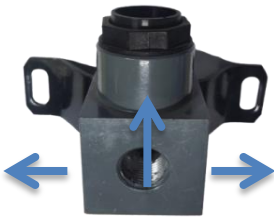
Part Number	Size (MM) X (INCHES)	Out Put	Pressure Rating (Bar)
WB24012005	20 x 0.5"	1	16
WB24012505	25 x 0.5"	1	16

## Wall Bracket Two Way Without Ball Valve



Part Number	Size (MM) X (INCHES)	Out Put	Pressure Rating (Bar)
WB242005	20 x 0.5"	2	16
WB242505	25 x 0.5"	2	16

## Wall Bracket Three Way Without Ball Valve



Part Number	Size (MM) X (INCHES)	Out Put	Pressure Rating (Bar)
WB24032005	20 x 0.5"	3	16
WB24032505	25 x 0.5"	3	16

## Wall Bracket Single Way With Mini Ball Valve



Part Number	Size (MM) X (INCHES)	Out Put	Pressure Rating (Bar)
WB24012005MB05	20 x 0.5"	1	16
WB24012505MB05	25 x 0.5"	1	16

## Wall Bracket Two Way With Mini Ball Valve



Part Number	Size (MM) X (INCHES)	Out Put	Pressure Rating (Bar)
WB24022005MB05	20 x 0.5"	2	16
WB24022505MB05	25 x 0.5"	2	16

## Wall Bracket Two Way With Mini Ball Valve



Part Number	Size (MM) X (INCHES)	Out Put	Pressure Rating (Bar)
WB24032005MB05	20 x 0.5"	3	16
WB24032505MB05	25 x 0.5"	3	16

# Wall Brackets And Manifolds

## Manifold Four Way Without Ball Valve



Part Number	Size (MM) X (INCHES)	Out Put	Pressure Rating (Bar)
CAMF200504	20 x 0.5"	4 Way	16
CAMF250504	25 x 0.5"	4 Way	16

## Manifold Five Way Without Ball Valve



Part Number	Size (MM) X (INCHES)	Out Put	Pressure Rating (Bar)
CAMF200505	20 x 0.5"	5 Way	16
CAMF250505	25 x 0.5"	5 Way	16

## Manifold Six Way Without Ball Valve



Part Number	Size (MM) X (INCHES)	Out Put	Pressure Rating (Bar)
CAMF200506	20 x 0.5"	6	16
CAMF250506	25 x 0.5"	6	16

## Manifold Four Way With Mini Ball Valve



Part Number	Size (MM) X (INCHES)	Out Put	Pressure Rating (Bar)
CAMF200504MB05	20 x 0.5"	4	16
CAMF250504MB05	25 x 0.5"	4	16

## Manifold Five Way With Mini Ball Valve



Part Number	Size (MM) X (INCHES)	Out Put	Pressure Rating (Bar)
CAMF200505MB05	20 x 0.5"	5	16
CAMF250505MB05	25 x 0.5"	5	16

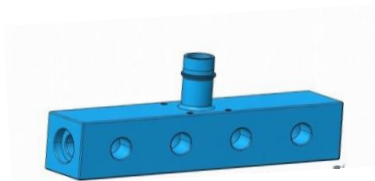
## Manifold Six Way With Mini Ball Valve



Part Number	Size (MM) X (INCHES)	Out Put	Pressure Rating (Bar)
CAMF200506MB05	20 x 0.5"	6	16
CAMF250506MB05	25 x 0.5"	6	16

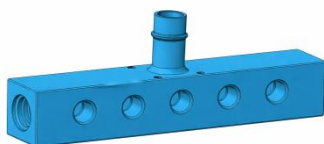
# Wall Brackets And Manifolds

## Integrated Manifold Four Way Without Ball Valve



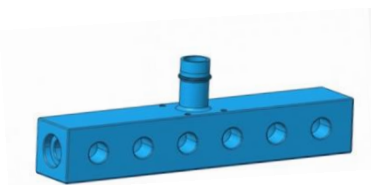
Part Number	Size (MM) X (INCHES)	Out Put	Pressure Rating (Bar)
CAMF16200504	20 x 0.5"	4	16
CAMF16250504	25 x 0.5"	4	16

## Integrated Manifold Five Way Without Ball Valve



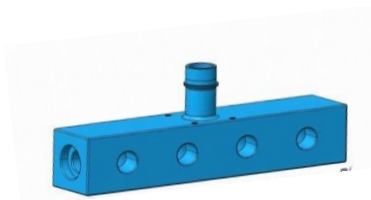
Part Number	Size (MM) X (INCHES)	Out Put	Pressure Rating (Bar)
CAMF16200505	20 x 0.5"	5	16
CAMF16250505	25 x 0.5"	5	16

## Integrated Manifold Six Way Without Ball Valve



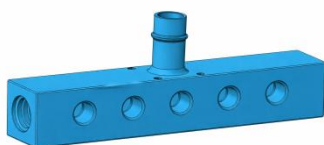
Part Number	Size (MM) X (INCHES)	Out Put	Pressure Rating (Bar)
CAMF16200506	20 x 0.5"	6	16
CAMF16250506	25 x 0.5"	6	16

## Integrated Manifold Four Way With Mini Ball Valve



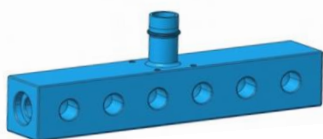
Part Number	Size (MM) X (INCHES)	Out Put	Pressure Rating (Bar)
CAMF16200504MB05	20 x 0.5"	4	16
CAMF16250504MB05	25 x 0.5"	4	16

## Integrated Manifold Five Way With Mini Ball Valve



Part Number	Size (MM) X (INCHES)	Out Put	Pressure Rating (Bar)
CAMF16200505MB05	20 x 0.5"	5	16
CAMF16250505MB05	25 x 0.5"	5	16

## Integrated Manifold Six Way With Mini Ball Valve



Part Number	Size (MM) X (INCHES)	Out Put	Pressure Rating (Bar)
CAMF16200506MB05	20 x 0.5"	6	16
CAMF16250506MB05	25 x 0.5"	6	16

# Wall Brackets And Manifolds

## Manifold Four Way With Mini Ball Valve



Part Number	Size (MM)	Size (Inches)	Outlet	Pressure Rating (Bar)
GM321204	32	1-1/4"	4	16
GM401504	40	1-1/2"	4	16
GM502004	50	2"	4	16
GM632504	63	2-1/2"	4	16

## Manifold Six Way With Mini Ball Valve



Part Number	Size (MM)	Size (Inches)	Outlet	Pressure Rating (Bar)
GM321206	32	1-1/4"	6	16
GM401506	40	1-1/2"	6	16
GM502006	50	2"	6	16
GM632506	63	2-1/2"	6	16

## Manifold Four Way With In built Mini Ball Valve



Part Number	Size (MM)	Size (Inches)	Outlet	Pressure Rating (Bar)
GMIBV321204	32	1-1/4"	4	16
GMIBV401504	40	1-1/2"	4	16
GMIBV502004	50	2"	4	16
GMIBV632504	63	2-1/2"	4	16

## Manifold Six Way With In built Mini Ball Valve



Part Number	Size (MM)	Size (Inches)	Outlet	Pressure Rating (Bar)
GMIBV321206	32	1-1/4"	6	16
GMIBV401506	40	1-1/2"	6	16
GMIBV502006	50	2"	6	16
GMIBV632506	63	2-1/2"	6	16

# Wall Brackets And Manifolds

## Manifold Four Way With Mini Ball Valve (Vertical)



Part Number	Size (MM)	Size (Inches)	Outlet	Pressure Rating (Bar)
GMV321204	32	1-1/4"	4	16
GMV401504	40	1-1/2"	4	16
GMV502004	50	2"	4	16
GMV632504	63	2-1/2"	4	16

## Manifold Six Way With Mini Ball Valve (Vertical)



Part Number	Size (MM)	Size (Inches)	Outlet	Pressure Rating (Bar)
GMV321206	32	1-1/4"	6	16
GMV401506	40	1-1/2"	6	16
GMV502006	50	2"	6	16
GMV632506	63	2-1/2"	6	16

## Manifold Four Way With In built Mini Ball Valve (Vertical)



Part Number	Size (MM)	Size (Inches)	Outlet	Pressure Rating (Bar)
GMIBVV321204	32	1-1/4"	4	16
GMIBVV401504	40	1-1/2"	4	16
GMIBVV502004	50	2"	4	16
GMIBVV632504	63	2-1/2"	4	16

## Manifold Six Way With In built Mini Ball Valve (Vertical)



Part Number	Size (MM)	Size (Inches)	Outlet	Pressure Rating (Bar)
GMIBVV321206	32	1-1/4"	6	16
GMIBVV401506	40	1-1/2"	6	16
GMIBVV502006	50	2"	6	16
GMIBVV632506	63	2-1/2"	6	16

# Special 3Pc Inline Ball Valves And Actuators

## Quickair Special 3Pc Inline Ball Valves



Part Number	Size (MM)	Size (Inches)	Pressure Rating (Bar)
INBV242000	20	3/4"	16
INBV242500	25	1"	16
INBV243200	32	1-1/4"	16
INBV244000	40	1-1/2"	16
INBV245000	50	2"	16
INBV246300	63	2-1/2"	16

## Quickair Special 3Pc Inline Male Ball Valves



Part Number	Size (MM)	Size (Inches)	Pressure Rating (Bar)
INBV24M2007	20	3/4"	16
INBV24M2510	25	1"	16
INBV24M3212	32	1-1/4"	16
INBV24M4015	40	1-1/2"	16
INBV24M5020	50	2"	16
INBV24M6325	63	2-1/2"	16

## Quickair Special 3Pc Inline Female Ball Valves



Part Number	Size (MM)	Size (Inches)	Pressure Rating (Bar)
INBV24F2007	20	3/4"	16
INBV24F2510	25	1"	16
INBV24F3212	32	1-1/4"	16
INBV24F4015	40	1-1/2"	16
INBV24F5020	50	2"	16
INBV24F6325	63	2-1/2"	16

## Quickair Special 3Pc Inline Ball Valves (SS 304,SS316)



Part Number	Size (MM)	Size (Inches)	Pressure Rating (Bar)
BFXX2000	20	3/4"	16
BFXX2500	25	1"	16
BFXX3200	32	1-1/4"	16
BFXX4000	40	1-1/2"	16
BFXX5000	50	2"	16
BFXX6300	63	2-1/2"	16

# Special 3Pc Inline Ball Valves And Actuators

## Quickair Special 3Pc Inline Male Ball Valves (SS 304,SS316)



Part Number	Size (MM)	Size (Inches)	Pressure Rating (Bar)
BFXXM2007	20	3/4"	16
BFXXM2510	25	1"	16
BFXXM3212	32	1-1/4"	16
BFXXM4015	40	1-1/2"	16
BFXXM5020	50	2"	16
BFXXM6325	63	2-1/2"	16

## Quickair Special 3Pc Inline Female Ball Valves (SS 304,SS316)



Part Number	Size (MM)	Size (Inches)	Pressure Rating (Bar)
BFXXF2007	20	3/4"	16
BFXXF2510	25	1"	16
BFXXF3212	32	1-1/4"	16
BFXXF4015	40	1-1/2"	16
BFXXF5020	50	2"	16
BFXXF6325	63	2-1/2"	16

## Inline Brass Ball Valve



Part Number	Size (MM)	Size (Inches)	Pressure Rating (Bar)
INBV20	20	3/4"	16
INBV25	25	1"	16

## Inline Brass Ball Valve Female Threaded



Part Number	Size (MM)	Size (Inches)	Pressure Rating (Bar)
INBVF2007	20	3/4"	16
INBVF2510	25	1"	16

## Mini Brass Ball Valve



Part Number	Size (MM)	Size (Inches)	Pressure Rating (Bar)
MBVMF050	16	1/2"	16

# Special 3Pc Inline Ball Valves And Actuators

## Butterfly Valve



Part Number	Size (Inches)	Pressure Rating (Bar)
80-83-22-23-EM-150#	3"	16
100-83-22-23-EM-150#	4"	16
150-83-22-23-EM-150#	6"	16
200-83-22-23-EM-150#	8"	16

## Ball Valve



Part Number	Size (Inches)	Pressure Rating (Bar)
BV110200	1/4"	16
BV110500	1/2"	16
BV110500	3/4"	16
BV111000	1"	16
BV111200	1-1/4"	16
BV111500	1-1/2"	16
BV112000	2"	16
BV112500	2-1/2"	16

## Screwed End Ball Valve With Actuator



Part Number	Size (Inches)	Pressure Rating (Bar)
BSXX2045	3/4"	16
BSXX2554	1"	16
BSXX3262	1-1/4"	16
BSXX4074	1-1/2"	16
BSXX5088	2"	16
BSXX6307	2-1/2"	16

## Flanged End Ball Valve With Actuator



Part Number	Size (Inches)	Pressure Rating (Bar)
FEXX2045	3/4"	16
FEXX2554	1"	16
FEXX3262	1-1/4"	16
FEXX4074	1-1/2"	16
FEXX5088	2"	16
FEXX6307	2-1/2"	16

# Special 3Pc Inline Ball Valves And Actuators

## 3Pc Inline Pneumatic Ball Valve With Actuator



Part Number	Size (Inches)	Pressure Rating (Bar)
BSXX2045DA	3/4"	16
BSXX2554DA	1"	16
BSXX3262DA	1-1/4"	16
BSXX4074DA	1-1/2"	16
BSXX5088DA	2"	16
BSXX6307DA	2-1/2"	16

## 3Pc Screwed End Pneumatic Ball Valve With Actuator



Part Number	Size (Inches)	Pressure Rating (Bar)
SSXX2045	3/4"	16
SSXX2554	1"	16
SSXX3262	1-1/4"	16
SSXX4074	1-1/2"	16
SSXX5088	2"	16
SSXX6307	2-1/2"	16

# Supports, Spares Tools & Accessories

## Holding Clips



Part Number	Size (MM)
CL112000	20
CL112500	25
CL113200	32
CL114000	40
CL115000	50
CL116300	63

## Bush With O Ring Gasket



Part Number	Size (MM)
BS132000	20
BS132500	25
BS133200	32
BS134000	40
BS135000	50
BS136300	63

## Holding Clips



Part Number	Size (MM)
CSPP2000	20
CSPP2500	25
CSPP3200	32
CSPP4000	40
CSPP5000	50
CSPP6300	63

## L Angle



Part Number	Size (Inches)
LA110304	3" x 4"
LA110408	4" x 8"
LA110604	6" x 4"
LA110606	6" x 6"
LA110608	6" x 8"
LA110609	6" x 9"
LA110612	6" x 12"
LA111024	10" x 24"

## Cap With Retainer Rings



Part Number	Size (MM)
BO132000	20
BO132500	25
BO133200	32
BO134000	40
BO135000	50
BO136300	63

## Opening Clip



Part Number	Size (MM)
OC132000	20
OC132500	25
OC133200	32
OC134000	40
OC135000	50
OC136300	63

## U Clamp



Part Number	Size (MM)
UC110000	-

## Crimping Machine



Part Number	Size (Inches)
CM130000	3/4" - 10"

## Tube Cutter



Part Number	Size (MM)
TC110100	20-63

# Supports, Spares Tools & Accessories

## Chamfering Tool



Part Number	Size (MM)
CT110100	20 - 63

## Air Gun



Part Number	Size (MM)
AG110200	20 - 63

## Deburring Tool



Part Number	Size (Inches)
DB110000	3/4" - 8"

## Crimping Jaws



Part Number	Size (MM)
CJ133000	3"
CJ134100	4"
CJ136000	6"
CJ138000	8"
CJ1310000	10"

## Cap Opening Tool



Part Number	Size (MM)
OT132000	20
OT132500	25
OT133200	32
OT134000	40
OT135000	50
OT136300	63

## Hex Nipple



Part Number	Size (Inches)
HN110500	1/2"
HN110700	3/4"
HN111000	1"
HN111200	1-1/4"
HN111500	1-1/2"
HN112000	2"

## Expansion Hose



Part Number	Size (MM)
EH112505*	3"
EH112507*	4"
EH112510*	6"
EH113210*	8"
EH114010*	10"

## Recoil Hose



Part Number	Size (MM)
CJ133000	3"
CJ134100	4"
CJ136000	6"
CJ138000	8"
CJ1310000	10"

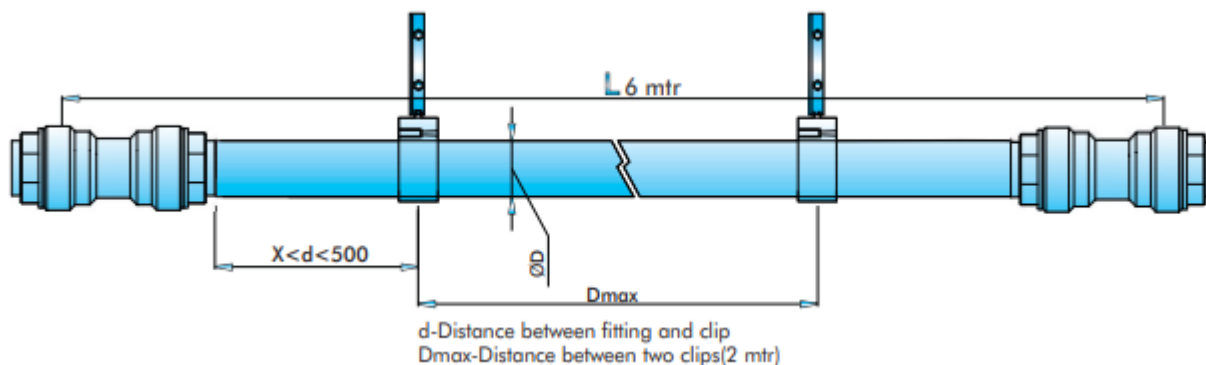
## P U Tubes



Part Number	Size (MM)
CJ133000	3"
CJ134100	4"
CJ136000	6"
CJ138000	8"
CJ1310000	10"

# Aluminum Piping AP & AA Series Installation Guide

Before Installing **Quickair** system a responsible person should check the area of installation Confirm to regulation designed to prevent the risk of explosion. **Quickair** must be installed either After the receiver or after the dryer. Flexible hose should be fitted at the beginning of the piping system. In order to counter the vibration found in any compressed air piping system. When maintaining or modifying the **Quickair** piping system the work must be undertaken only after the compressed air system has been vented. The installer must use only **Quickair** components and accessories. The installer also ensure that the installation as been properly carried out in-line with the instruction and that it meets all legal requirements.



## Fixing The Tube



Step 1: Cutting the Tubes



Step 2: Chamfering the Tubes



Step 3: Inserting the tubes into fitting



Step 4: Inserting the Tubes into fitting

## Fixing The Drop



Step 1: Positioning the Droplet on the tube



Step 2: Marking the position of the hole on tube



Step 3: Drilling the Required Hole on the tube



Step 4: Chamfering the hole

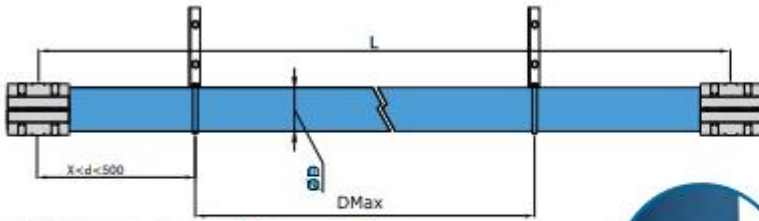


Step 5: Aligning the Droplet to the hole

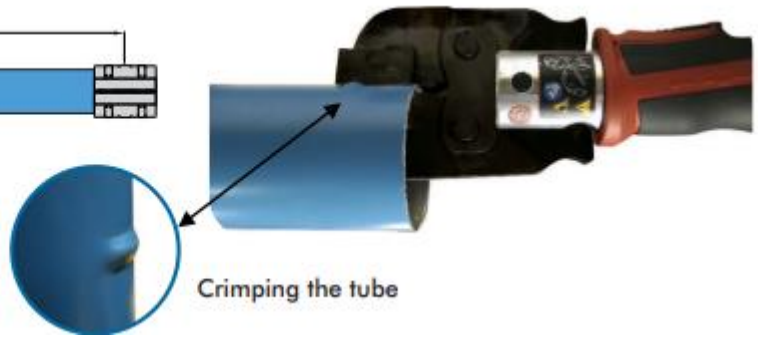


Step 6: Fixing the Droplet on the tube


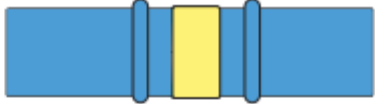
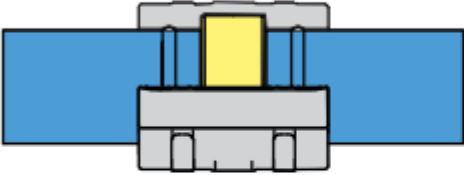
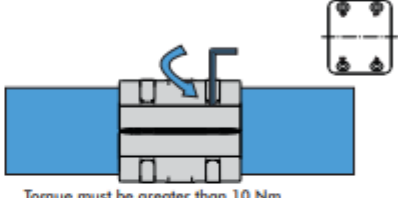

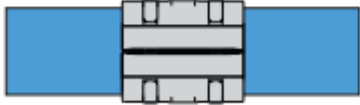
# Aluminum Piping IT & CP Series Installation Guide

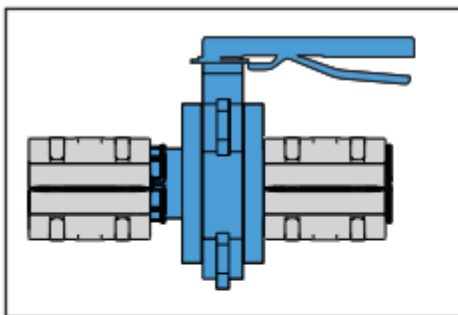


d-Distance between fitting and clip.  
 ØD- Diameter of the pipe  
 Dmax-Distance between two clips(1m)

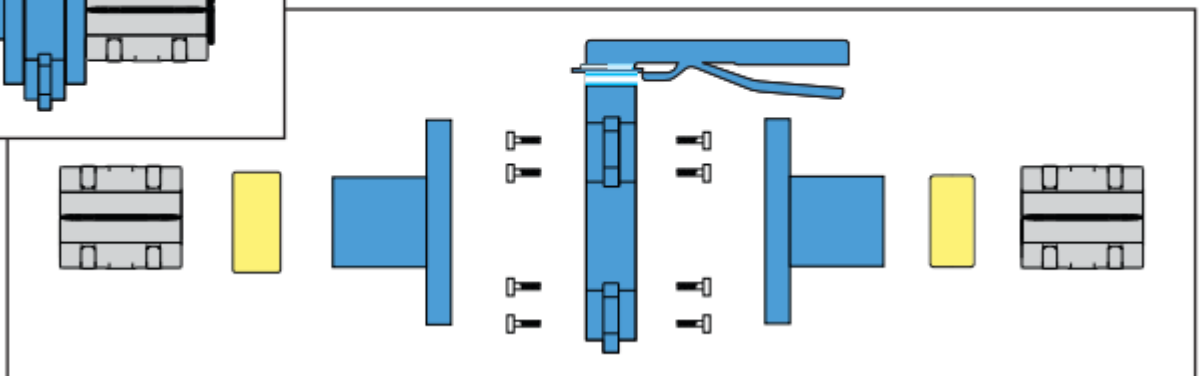


Crimping the tube

 <p>STEP 1: Join the bush with crimped pipe.</p>	 <p>STEP 2: Join another crimped pipe with bush.</p>
 <p>STEP 3: Join the top and bottom clamp with the bush.</p>	 <p>Torque must be greater than 10 Nm</p> <p>STEP 4: Tight the clamp with align bolts and align key.</p>
 <p>STEP 5: While tightening maintain 1mm gap between top and bottom clamp.</p>	 <p>STEP 6: After tightening pass the air and check the leakage with soap water.</p>



Assembly of butterfly valve with clamps



# Customer Reference

**Quickair** serves customers widely in different industries, ranges from Foods, Machinery, Automatic, Electronic, Packaging, Auto Parts, Textile, Rail Transit, Beverage, Tobacco, Building Materials, Aerospace, Daily Chemicals, Household Furniture and Appliances And Many More Industries....

